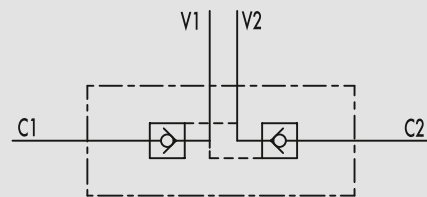


Doppelt entsperrbares Rückschlagventil mit einstellbarer Hohlschraube

TYPE
VBPDE SC

HYDRAULIC DIAGRAM



DOUBLE PILOT OPERATED CHECK VALVE WITH ADJUSTABLE BANJO UNION

USE AND OPERATION:

Pilot check valves are used to block the cylinder in both directions. Flow is free in one direction and blocked in the reverse direction until pilot pressure is applied. This valve is ideal for very short distance centre cylinders. The check cartridge serves also as fixing banjo, allowing after nut releasing a 90° regulation.

MATERIALS AND FEATURES:

Body: zinc-plated steel
Internal parts: hardened and ground steel
Seals: BUNA N standard
Poppet type: any leakage.

APPLICATIONS:

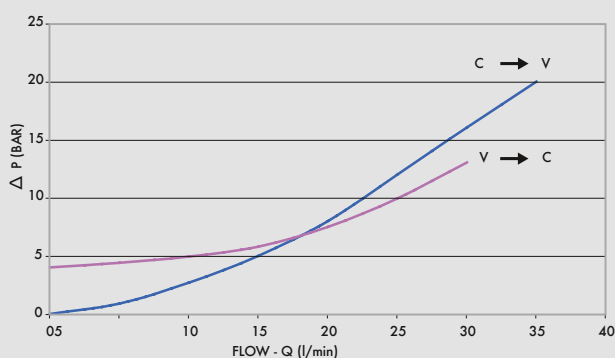
Connect V1 and V2 to the pressure flow, connect C1 directly to the cylinder through the 3/8" screw and C2 to the cylinder through the banjo.

ON REQUEST

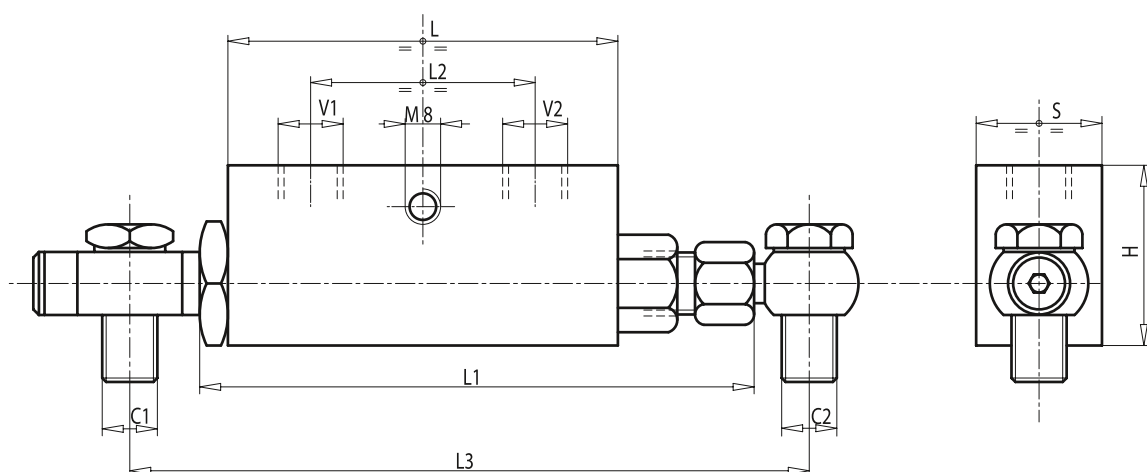
- 1/4" V1 and V2
- without seal on pilot piston

PRESSURE DROPS CURVE

Oil temperature: 50° C - Oil viscosity: 30 cSt



CODE	TYPE	PILOT RATIO	MAX FLOW Lt. / min	MAX PRESSURE Bar	CRACKING PRESSURE Bar
V0112	VBPDE 3/8" L SC	1 : 5,5	30	350	4



CODE	TYPE	V1 - V2 GAS	C1 - C2 mm	L mm	L1 mm	L2 mm	L3 mm	H mm	S mm	WEIGHT kg
V0112	VBPDE 3/8" L SC	G 3/8"	12L	64	106	36	136	40	30	0,654