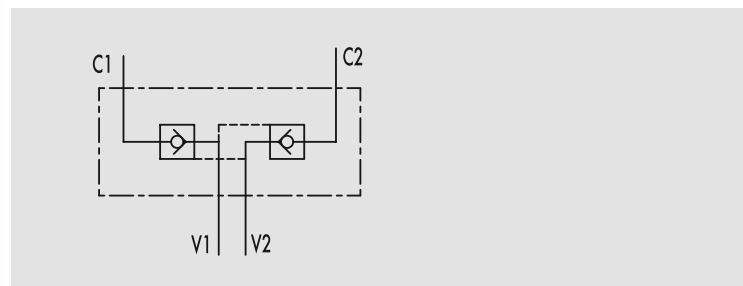


Doppelt entsperrbares Rückschlagventil Direktmontage mit Hohlschraube

TYPE
VBPDE FLV

HYDRAULIC DIAGRAM



DOUBLE PILOT OPERATED CHECK VALVES FIXING BY SCREW

USE AND OPERATION:

Pilot check valves are used to block the actuator in both directions. Flow is free in one direction and blocked in the reverse direction until pilot pressure is applied. This valve can be fixed directly on cylinder through the drilled screw supplied with the valve.

MATERIALS AND FEATURES:

Body: zinc-plated steel
Internal parts: hardened and ground steel
Seals: BUNA N standard.
Popped type: any leakage.

APPLICATIONS:

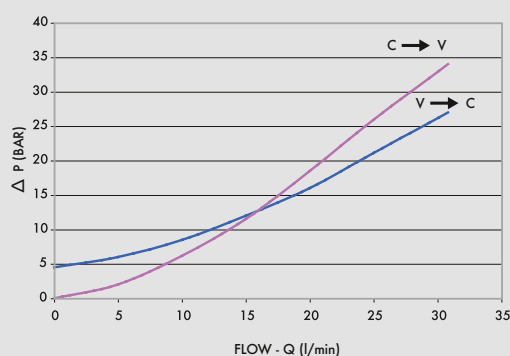
Connect V1 and V2 to the pressure flow and C1 and C2 to the actuator (C1 by the pipe and C2 by the screw).

ON REQUEST

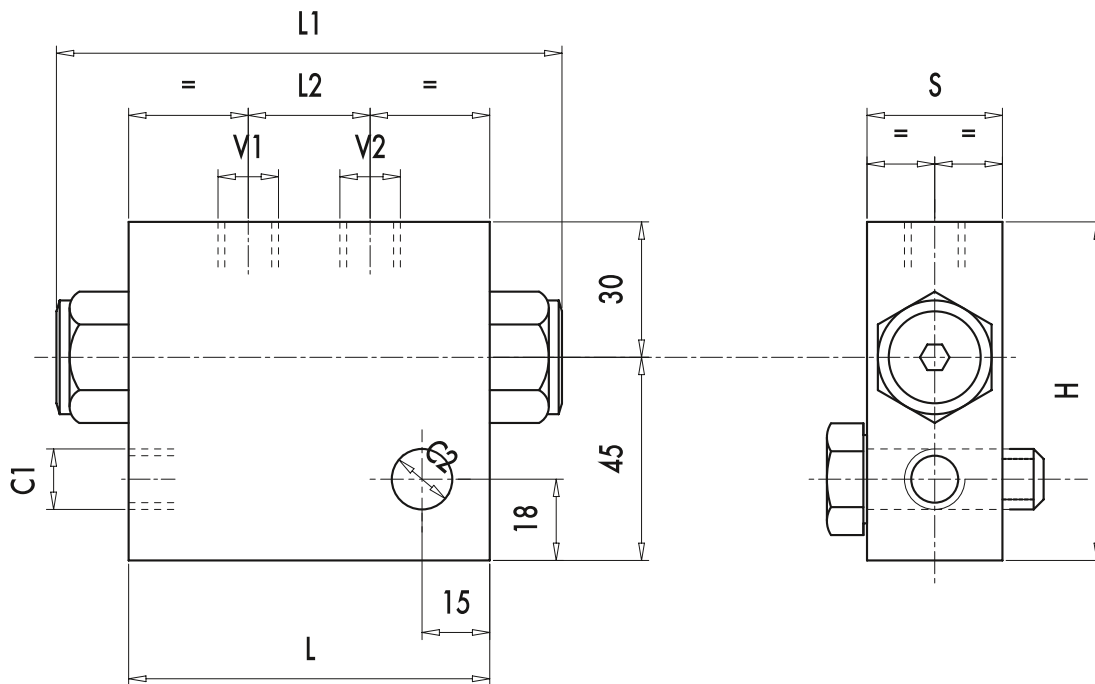
- without seal on pilot piston
- 1 Bar spring
- 8 Bar spring

Oil temperature: 50° C - Oil viscosity: 30 cSt

PRESSURE DROPS CURVE



CODE	TYPE	PILOT RATIO	MAX FLOW Lt. / min	MAX PRESSURE Bar	CRACKING PRESSURE Bar
V0178/FLV	VBPDE 1/4" FLV	1: 5,5	20	350	4,5
V0180/FLV	VBPDE 3/8" FLV	1: 5,5	30	350	4,5



CODE	TYPE	V1 - V2 C1 - C2 GAS	L mm	L1 mm	L2 mm	H mm	S mm	WEIGHT kg
V0178/FLV	VBPDE 1/4" FLV	G 1/4"	80	113	27	75	30	1,330
V0180/FLV	VBPDE 3/8" FLV	G 3/8"	80	113	30	75	30	1,250