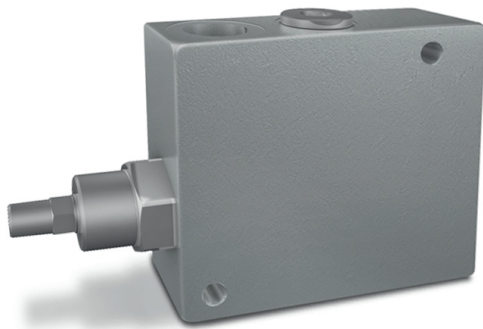


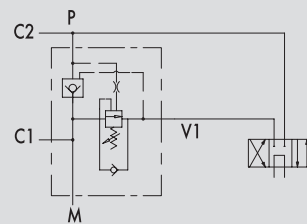




Diverse Ventile
VARIOUS VALVES



HYDRAULIC DIAGRAM



REGENERATIVE VALVE

USE AND OPERATION:

This valve allows to recover the oil from the rod to port C1 and to send it to the bottom valve through the port P, adding it to the pump flow rate.

When the pressure in the bottom valve of the cylinder achieves the setting value, oil from the rod is sent to the tank through port V1, restoring a non-regenerative system with maximum thrust.

The exclusion pressure of the regenerative depends only on the pressure in the bottom valve of the cylinder.

MATERIALS AND FEATURES:

Body: zinc-plated steel.

Internal parts: hardened and ground steel.

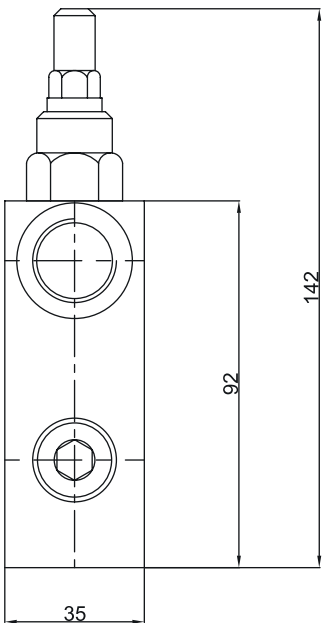
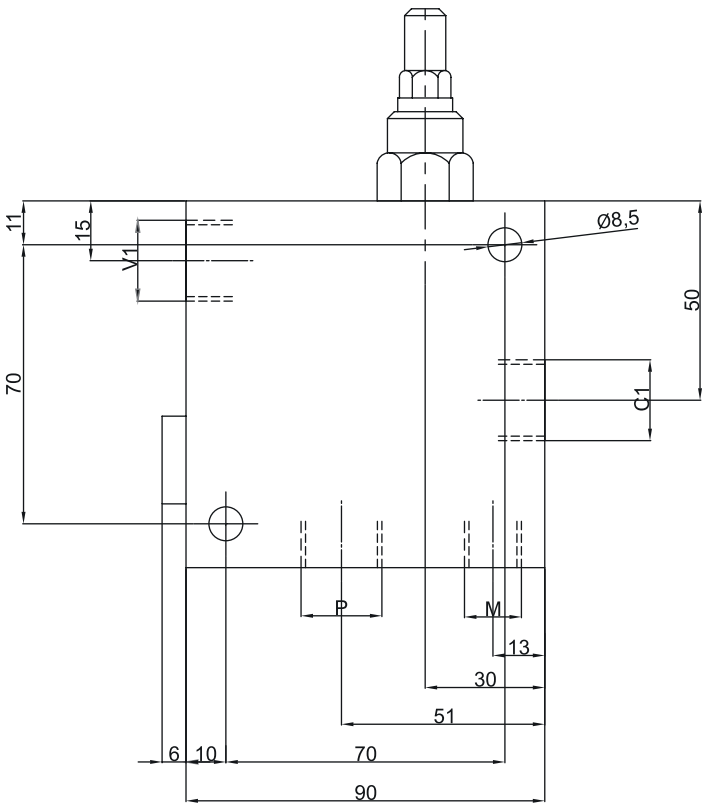
Seals: BUNA N standard

Tightness: minor leakage.

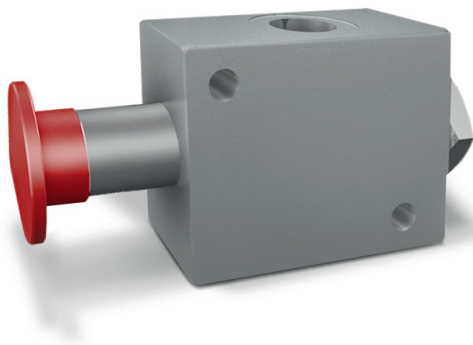
APPLICATIONS:

Connect C1 to the cylinder stem, V1 to the pressure flow, P to the cylinder bottom valve and to the pressure flow at the same time, M to the manometer if there is.

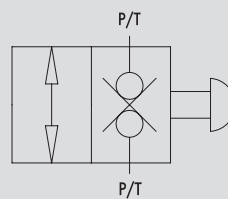
CODE	TYPE	PILOT RATIO	MAX FLOW Lt. / min	PRESSURE RANGE Bar
V1220	VRSP 1/2"	1:4,5	60	60-350
V1230	VRSP 3/4"	1:5,5	95	60-350



CODE	TYPE	V1-V2 C1-C2 GAS	L mm	L1 mm	L2 mm	L3 mm	L4 mm	L5 mm	L6 mm	L7 mm	L8 mm	L9 mm	L10 mm	H mm	H1 mm	S mm	WEIGHT Kg.
V1220	VRSP 1/2"	G 1/2"	90	6	10	70	51	30	13	70	11	15	50	92	142	35	2,026
V1230	VRSP 3/4"	G 3/4"	105	6	10	85	59	37	20	85	12	22	62	120	177	40	3,496



HYDRAULIC DIAGRAM



MANUAL EMERGENCY VALVE

USE AND OPERATION:

This pushbutton valve allows oil passage in a hydraulic circuit by means of a slider. Once the manual button is set into action oil flows from P towards T or the other way round. Basically are used as emergency button on the lifting equipment.

MATERIALS AND FEATURES:

Body: zinc-plated steel.

Internal parts: hardened and ground steel.

Seals: BUNA N standard

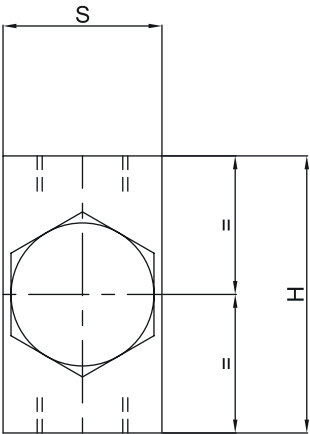
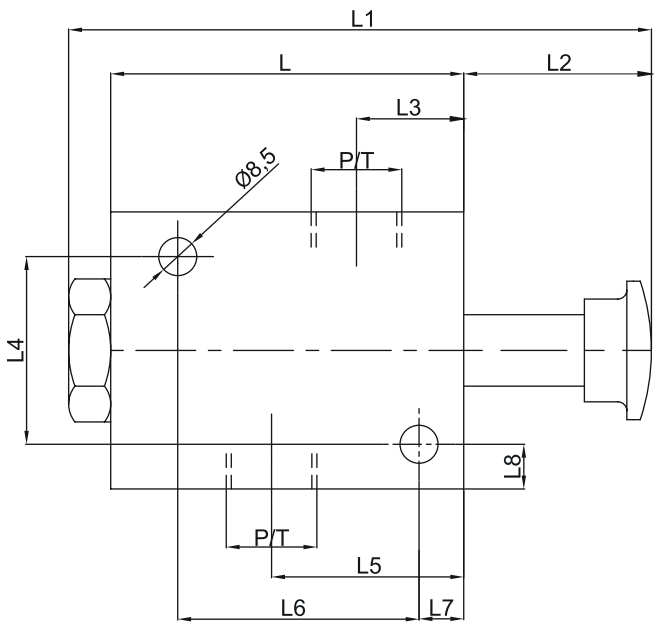
Tightness: minor leakage.

APPLICATIONS:

Connect the ports P and T to either distributor and circuit. When the button is pressed the flow is free, otherwise the flow is blocked in both directions.

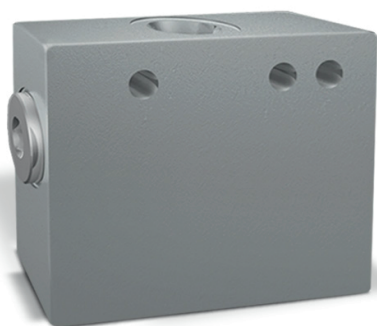
CODE	TYPE	MAX FLOW Lt. / min	MAX PRESSURE Bar
------	------	-----------------------	---------------------

V1320	VEM 1/2"	70	350
-------	----------	----	-----

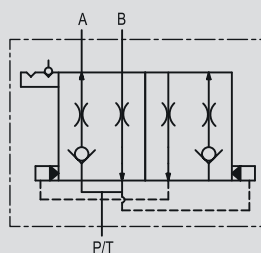


14

CODE	TYPE	P/T GAS	L mm	L1 mm	L2 mm	L3 mm	L4 mm	L5 mm	L6 mm	L7 mm	L8 mm	H mm	S mm	WEIGHT Kg.
V1320	VEM 1/2"	G 1/2"	79	130	42	24	42	43	54	10	10	62	35	1,220



HYDRAULIC DIAGRAM



VALVE FOR SEEDING ROW MARKER MACHINE

USE AND OPERATION:

This type of valves is used on seeding machines to handle the row marker. It allows the automatic ascent/descent inversion of single and double effect actuators, loading and unloading the port P/T.

MATERIALS AND FEATURES:

Body: zinc-plated steel.
Internal parts: hardened and ground steel.
Seals: BUNA N standard
Tightness: minor leakage.

APPLICATIONS:

Connect P/T to the power and A and B to the actuator.

ON REQUEST:

The valve can be supplied with:

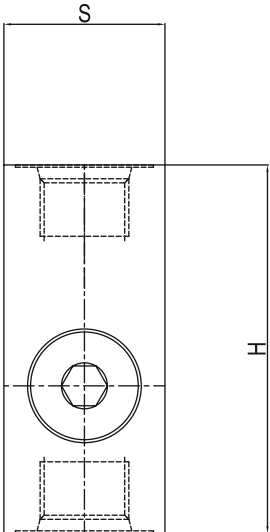
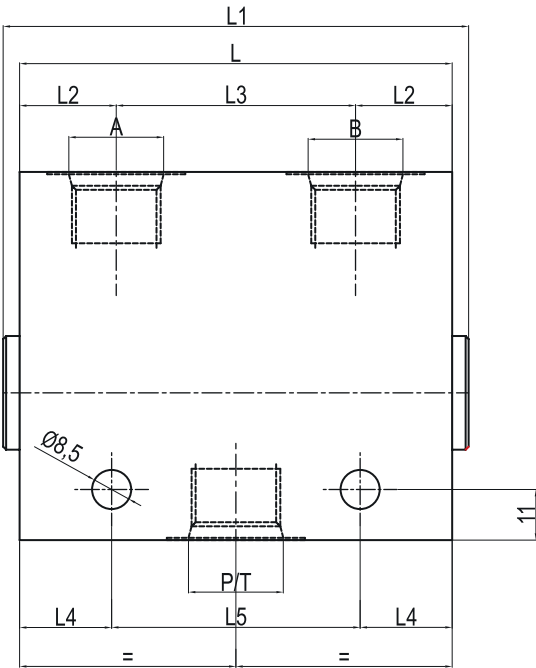
- 1/4" female adaptation
- Fitting for DIN 12L hose connection

CODE	TYPE	MAX PRESSURE Bar
------	------	---------------------

V1450

VDSF 3/4" - 16 UNF

350



CODE	TYPE	A - B P / T SAE	L mm	L1 mm	L2 mm	L3 mm	L4 mm	L5 mm	L6 mm	L7 mm	H mm	S mm	WEIGHT Kg.
------	------	-----------------------	---------	----------	----------	----------	----------	----------	----------	----------	---------	---------	---------------

V1450

VDFS 3/4" - 16 UNF

3/4" - 16

94

102

21

52

26

40

54

12

80

35

1,830



HYDRAULIC DIAGRAM



BRAKE UNCLAMPING VALVE, FLANGEABLE TO DANFOSS MOTORS OMP/OMR

USE AND OPERATION:

This valve is used to unlock the motors hydraulic brake.

MATERIALS AND FEATURES:

Body: zinc-plated steel.

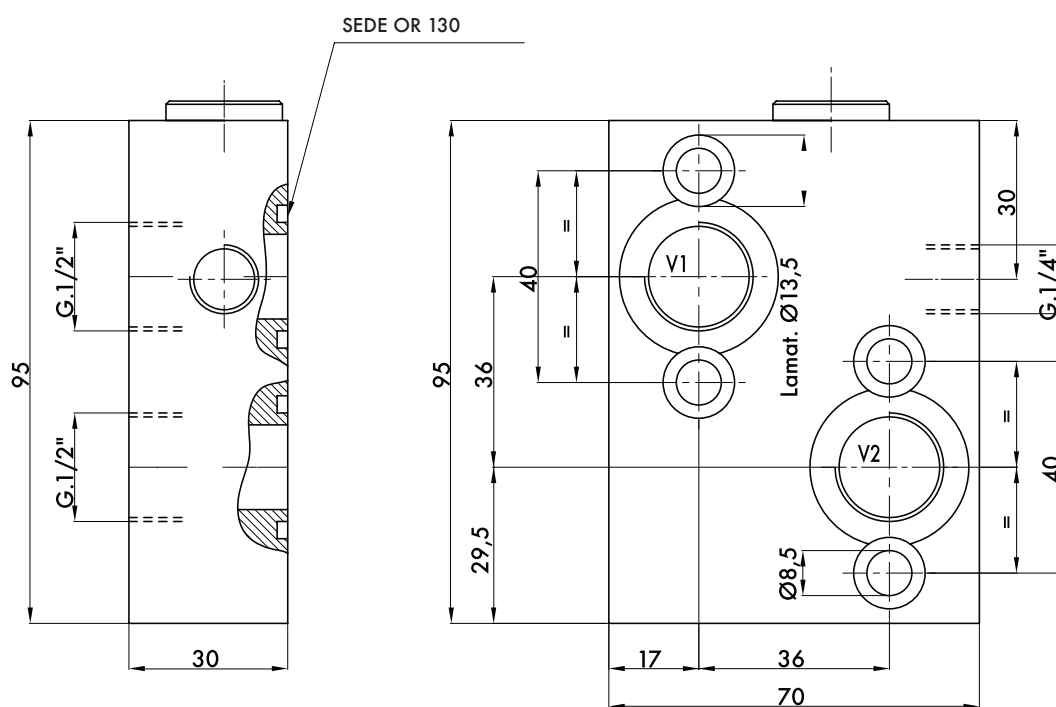
Internal parts: hardened and ground steel.

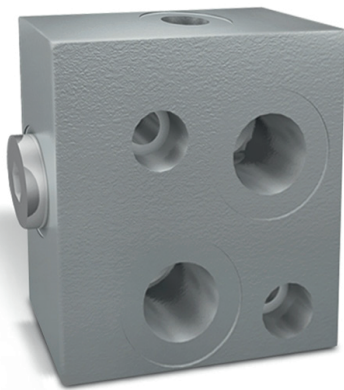
Seals: BUNA N standard

APPLICATIONS:

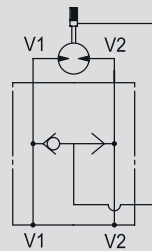
Flange V1 and V2 to the motor, connect the other side of V1 and V2 to the pressure flow and connect the 1/4" port to the motor brake.

CODE	TYPE	MAX FLOW Lt. / min	MAX PRESSURE Bar	WEIGHT Kg.
V0333	VSBF 1/2" OMP/OMR	60	300	1,312





HYDRAULIC DIAGRAM



BRAKE UNCLAMPING VALVE, FLANGEABLE TO DANFOSS MOTORS OMS

USE AND OPERATION:

This valve is used to unlock the motors hydraulic brake.

MATERIALS AND FEATURES:

Body: zinc-plated steel.

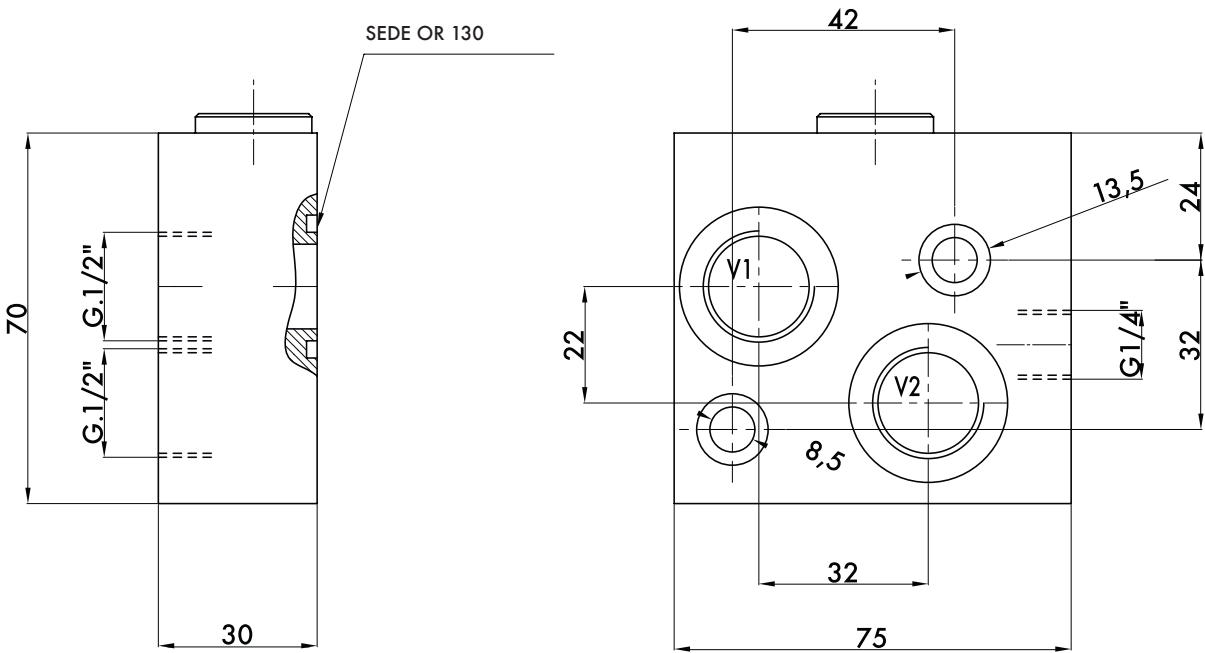
Internal parts: hardened and ground steel.

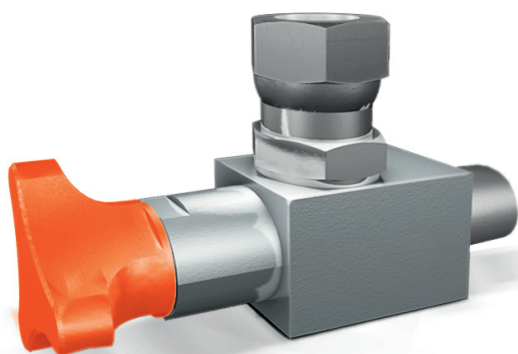
Seals: BUNA N standard

APPLICATIONS:

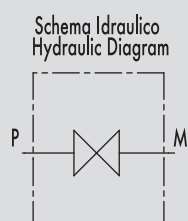
Flange V1 and V2 to the motor, connect the other side of V1 and V2 to the pressure flow and connect the 1/4" port to the motor brake.

CODE	TYPE	MAX FLOW Lt. / min	MAX PRESSURE Bar	WEIGHT Kg.
V0334	VSBF 1/2" OMS	40	300	1,312





HYDRAULIC DIAGRAM



GAUGE ISOLATOR - IN LINE AND 90° TYPE

USE AND OPERATION:

These valves are used to open or close the oil flow to the gauge in an hydraulic system.

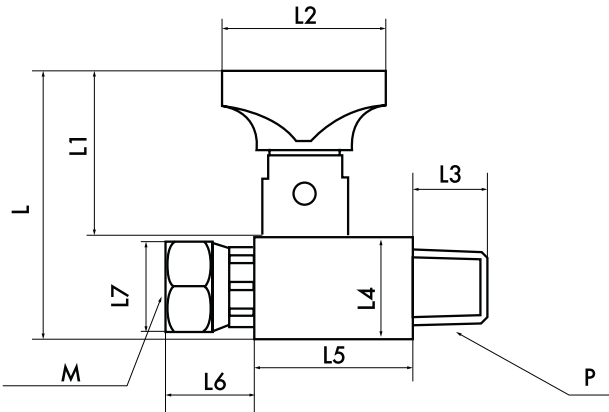
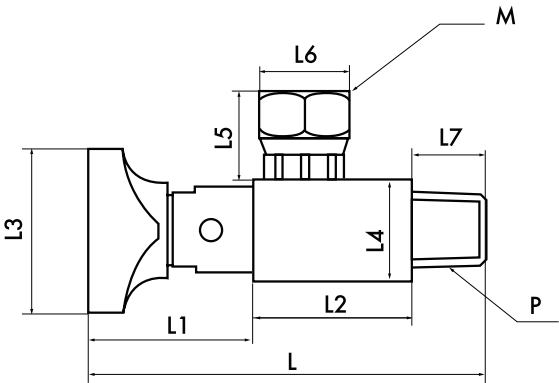
MATERIALS AND FEATURES:

Body: nickel steel
Seal: NBR

APPLICATIONS:

Screw the gauge isolator to the hydraulic system to the male port P and fix the gauge to female port M. In order to open or close the flow turn the knob.

CODE	TYPE	WORKING PRESS. Bar	MAX PRESSURE Bar
EM001L	EML 1/4" MF	400	600
EM001N	EM90° 1/4" MF	400	600



14

CODE	TYPE	P BSPT	M BSP	L mm	L1 mm	L2 mm	L3 mm	L4 mm	L5 mm	L6 mm	L7 mm	WEIGHT Kg.
EM001L	EML 1/4" MF	M 1/4"	F 1/4"	49,7	30,7	30,3	13,8	19	30	16,2	17	0,142
EM001N	EM90° 1/4" MF	M 1/4"	F 1/4"	72	29,5	29	30,3	19	16,2	17	13,8	0,140