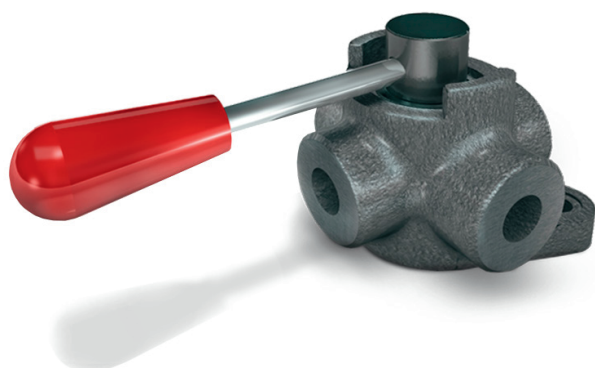


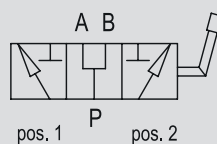
Ablenkungsventile

*DIVERTER VALVES*

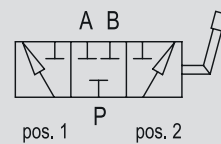
TYPE  
**DF 3**



HYDRAULIC DIAGRAM  
(with opened centre)



ON REQUEST  
(with closed centre)



## 3-WAYS DIVERTER VALVES

### USE AND OPERATION:

3 ways diverter valves is used to divert the flow towards 2 different outlets.

### MATERIALS AND FEATURES:

Body: cast iron  
Internal parts: hardened and ground steel  
Seals: BUNA N standard  
Tightness: minor leakage

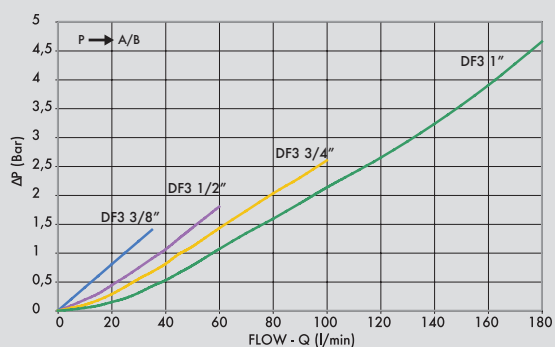
### APPLICATIONS:

Connect P to the pressure flow, A and B to the ports of the hydraulic circuit where flow has to be diverted. With lever in position 1 the flow is connected towards port A; with lever in position 2, the flow is connected towards port B. With lever in central position ports P, A and B are all connected (opened centre).

### A RICHIESTA:

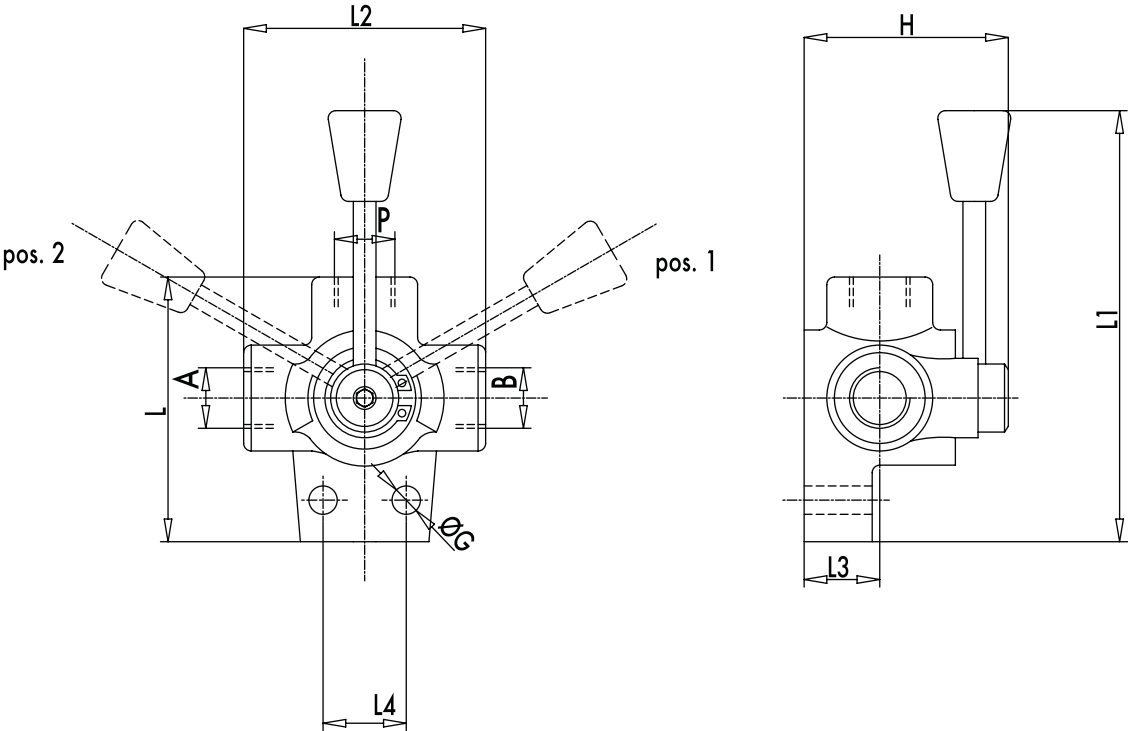
- Closed centre (CODE/CC)

### PRESSURE DROPS CURVE

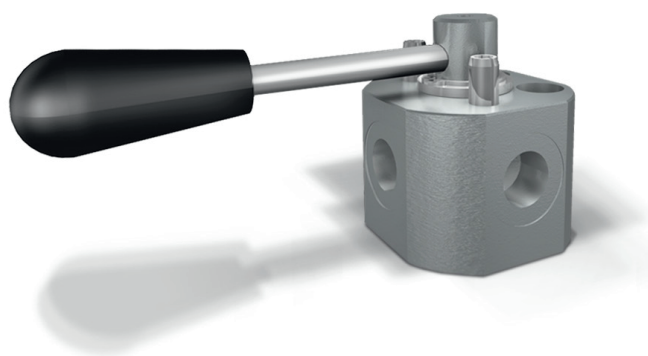


Oil temperature: 50° C - Oil viscosity: 30 cSt

CODE	TYPE	MAX FLOW L <sub>t</sub> / min	MAX PRESSURE Bar
<b>V0880</b>	DF 3 VIE 3/8"	35	250
<b>V0890</b>	DF 3 VIE 1/2"	60	250
<b>V0900</b>	DF 3 VIE 3/4"	100	250
<b>V0910</b>	DF 3 VIE 1"	180	250



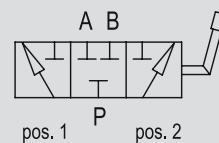
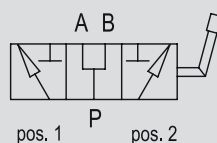
CODE	TYPE	A-B P GAS	L mm	L1 mm	L2 mm	L3 mm	L4 mm	ØG mm	H mm	WEIGHT Kg.
<b>V0880</b>	DF 3 VIE 3/8"	G 3/8"	76	140	68	25	26	8,5	67	0,914
<b>V0890</b>	DF 3 VIE 1/2"	G 1/2"	87	145	80	28	32	8,5	70	1,392
<b>V0900</b>	DF 3 VIE 3/4"	G 3/4"	103	150	94	30	32	11	78	2,030
<b>V0910</b>	DF 3 VIE 1"	G 1"	105	152	98	30	32	11	82	2,144



TYPE  
**DF AP**

HYDRAULIC DIAGRAM  
(with opened centre)

ON REQUEST  
(with closed centre)



## HIGH PRESSURE 3-WAYS DIVERTER VALVE, STEEL BODY

### USE AND OPERATION:

Diverter flow is used to divert the flow towards 2 different outlets.

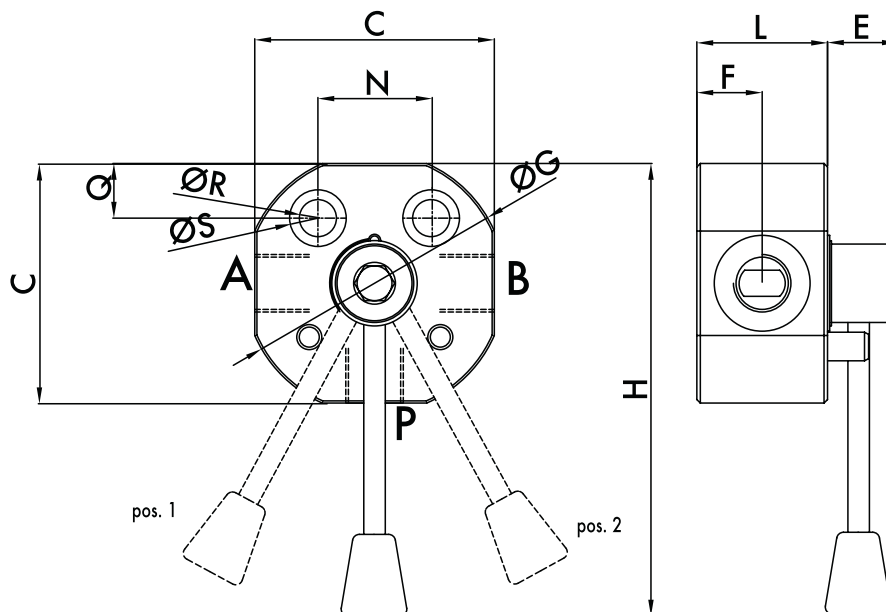
### MATERIALS AND FEATURES:

Body: steel  
Internal parts: hardened and ground steel  
Seals: BUNA N standard and anti-extrusion rings  
Tightness: minor leakage

### APPLICATIONS:

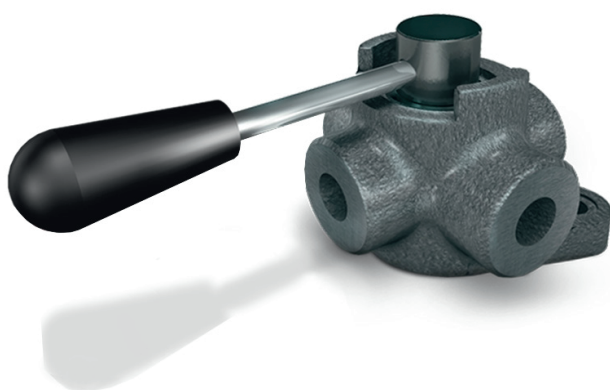
Connect P to the pressure flow, A and B to the ports of the hydraulic circuit where flow has to be diverted. With lever in position 1 the flow is connected towards port A; with lever in position 2, the flow is connected towards port B. With lever in central position ports P, A and B are all connected (opened centre).

CODE	TYPE	MAX FLOW Lt. / min	MAX PRESSURE Bar
<b>V0879/AP</b>	DF 3 VIE 1/4" AP ACC.	20	500
<b>V0881/AP</b>	DF 3 VIE 3/8" AP ACC.	35	500
<b>V0891/AP</b>	DF 3 VIE 1/2" AP ACC.	60	500
<b>V0901/AP</b>	DF 3 VIE 3/4" AP ACC.	100	500
<b>V0911/AP</b>	DF 3 VIE 1" AP ACC.	180	500



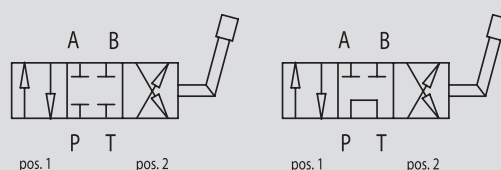
CODE	TYPE	A-B P GAS	C mm	N mm	Q mm	H mm	ØR mm	ØS mm	ØG mm	F mm	L mm	E mm
<b>V0879/AP</b>	DF 3 VIE 1/4" AP ACC.	1/4"	56	26	10	148	8,5	13,5	62	23,5	42,5	21
<b>V0881/AP</b>	DF 3 VIE 3/8" AP ACC.	3/8"	56	26	10	148	8,5	13,5	62	23,5	42,5	21
<b>V0891/AP</b>	DF 3 VIE 1/2" AP ACC.	1/2"	70	32	11	160	10,5	17	86	26	42,5	21
<b>V0901/AP</b>	DF 3 VIE 3/4" AP ACC.	3/4"	80	32	11	165	10,5	17	100	31	58	20
<b>V0911/AP</b>	DF 3 VIE 1" AP ACC.	1"	90	32	11	170	10,5	17	108	33	62	20

TYPE  
**IF 4**



HYDRAULIC DIAGRAM  
(with closed centre)

ON REQUEST  
(with opened centre)



## 4-WAYS DIVERTER VALVES

### USE AND OPERATION:

This valve is used to reverse oil flow from 2 ways in towards two ways out. It could be used to control a double acting actuators or to reverse the rotation of an hydraulic motor.

### MATERIALS AND FEATURES:

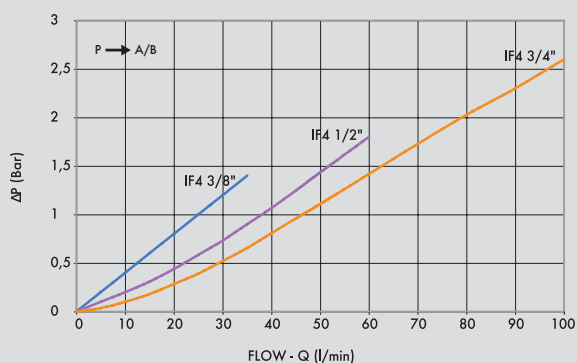
Body: cast iron  
Internal parts: hardened and ground steel  
Seals: BUNA N standard  
Tightness: low leakage

### APPLICATIONS:

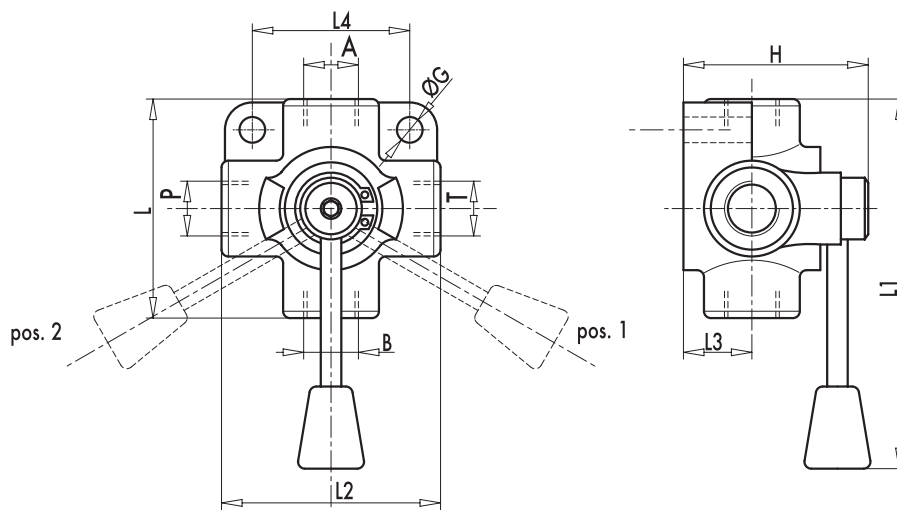
Connect P to the pressure flow, T to return and ports A and B to the actuators or motor. With lever in position 1, P is connected to A and at the same time B drains into the tank T; with lever in position 2, P is connected to B and at the same time A drains into tank T. With lever in central position all ports are closed (closed centre).

### A RICHIESTA:

- Open centre (CODE/CA).



CODE	TYPE	MAX FLOW L <sub>f</sub> / min	MAX PRESSURE Bar
<b>V0970</b>	IF 4 VIE 3/8"	35	250
<b>V0980</b>	IF 4 VIE 1/2"	60	250
<b>V0990</b>	IF 4 VIE 3/4"	100	250



16

CODE	TYPE	A-B P-T GAS	L mm	L1 mm	L2 mm	L3 mm	L4 mm	ØG mm	H mm	WEIGHT Kg.
<b>V0970</b>	IF 4 VIE 3/8"	G 3/8"	76	140	76	26	54	8,5	72	1,346
<b>V0980</b>	IF 4 VIE 1/2"	G 1/2"	88	145	88	30	65	8,5	82	1,928
<b>V0990</b>	IF 4 VIE 3/4"	G 3/4"	95	180	95	32	74	8,5	90	2,534

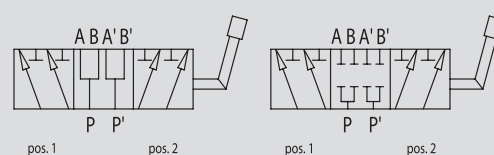


TYPE  
**DF 6**



HYDRAULIC DIAGRAM  
(with opened centre)

ON REQUEST  
(with closed centre)



## 6-WAYS DIVERTER VALVES

### USE AND OPERATION:

This valve is made up by two 3-ways diverters coupled: each of the 2 parts is used to divert the inlet flow towards two ports. The single lever controls both the parts at the same time. It's ideal to control 2 actuators.

### MATERIALS AND FEATURES:

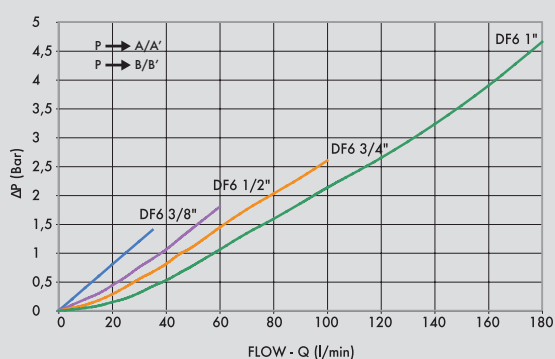
Body: cast iron  
Internal parts: hardened and ground steel  
Seals: BUNA N standard  
Tightness: minor leakage

### APPLICATIONS:

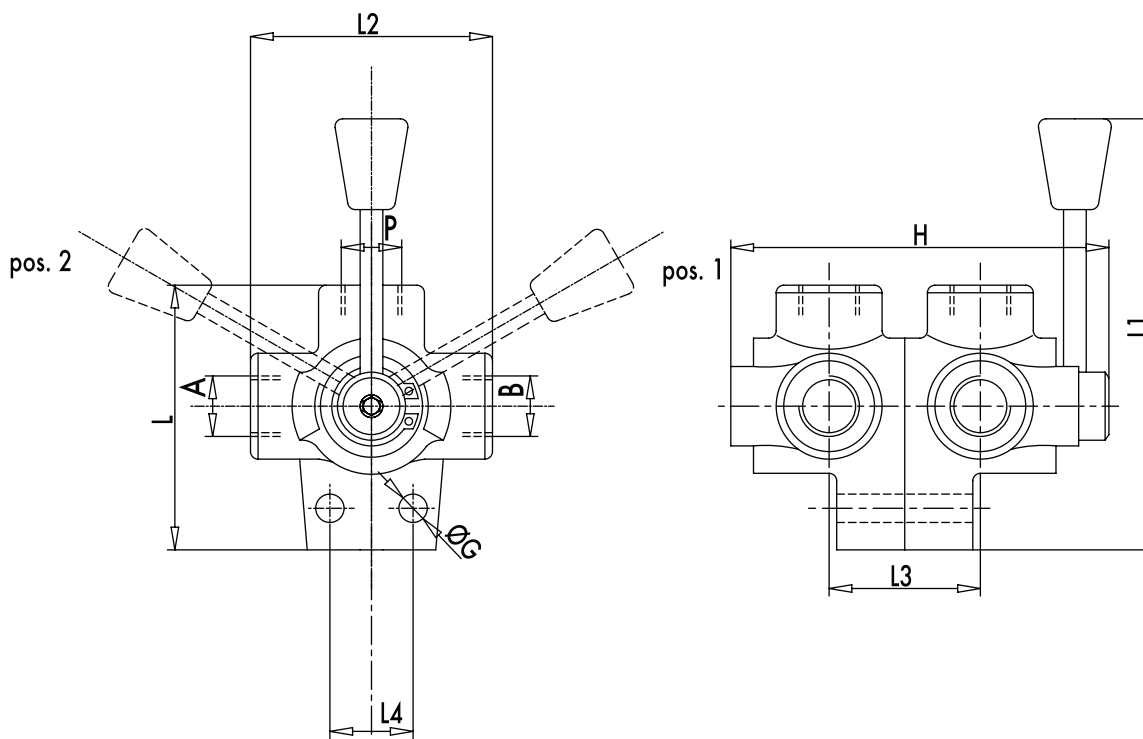
Connect P and P' to the 2 pressure flows, ports A and B to the first actuator and ports A' and B' to the second actuator. With lever in position 1, P is connected to A and P' to A'; with lever in position 2, P is connected to B and P' to B'. With lever in central position all ports are connected among each other (opened centre).

### A RICHIESTA:

- Closed centre (CODE/CC)

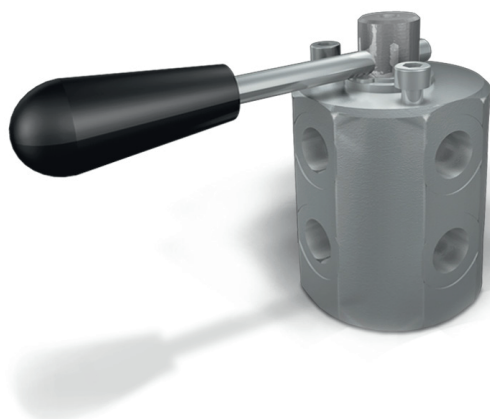


CODE	TYPE	MAX FLOW L <sub>f</sub> / min	MAX PRESSURE Bar
<b>V0920</b>	DF 6 VIE 3/8"	35	250
<b>V0940</b>	DF 6 VIE 1/2"	60	250
<b>V0950</b>	DF 6 VIE 3/4"	100	250
<b>V0960</b>	DF 6 VIE 1"	180	250

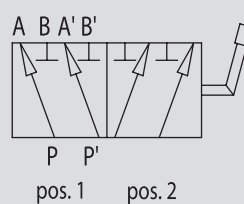


CODE	TYPE	A-B P-T GAS	L mm	L1 mm	L2 mm	L3 mm	L4 mm	ØG mm	H mm	WEIGHT Kg.
<b>V0920</b>	DF 6 VIE 3/8"	G 3/8"	76	140	68	45	26	8,5	117	1,688
<b>V0940</b>	DF 6 VIE 1/2"	G 1/2"	87	145	80	51	32	8,5	125	2,628
<b>V0950</b>	DF 6 VIE 3/4"	G 3/4"	103	150	94	55	32	11	140	4,634
<b>V0960</b>	DF 6 VIE 1"	G 1"	105	152	98	60	32	11	155	4,238

TYPE  
**DF 6A**



HYDRAULIC DIAGRAM



## 6-WAYS DIVERTER VALVES, STEEL BODY

### USE AND OPERATION:

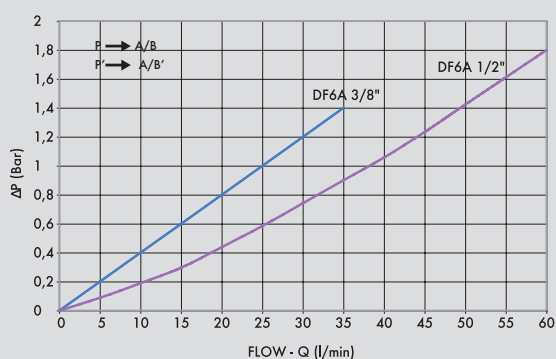
This valve is used to divert the flow from 2 ways in towards 4 ports (two at time alternatively). They are used to control 2 actuators.

### MATERIALS AND FEATURES:

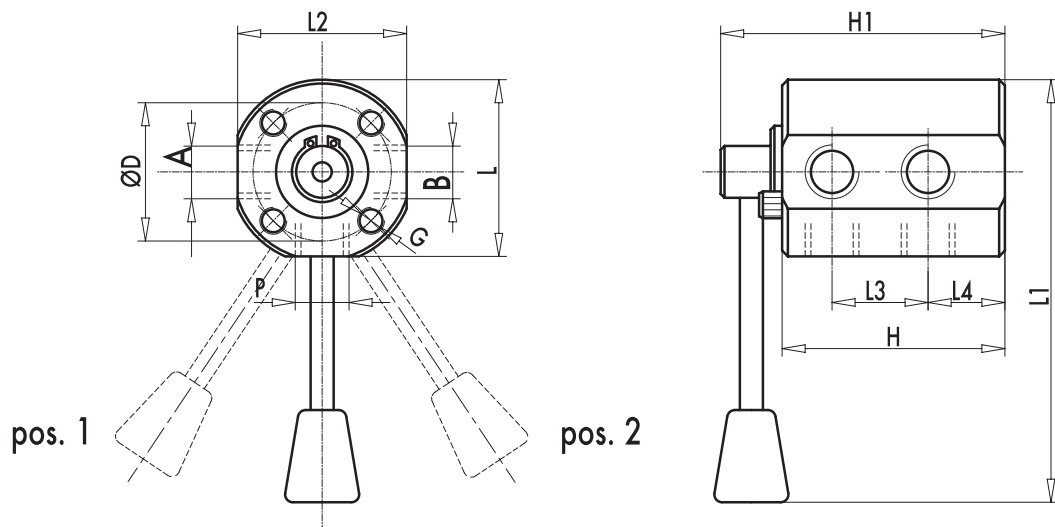
Body: zinc-plated steel  
Internal parts: hardened and ground steel  
Seals: BUNA N standard  
Tightness: minor leakage

### APPLICATIONS:

Connect P and P' to the 2 pressure flows, ports A and A' to the first actuator and ports B and B' to the second actuator. With lever in position 1, P is connected to A and A'; with lever in position 2, P is connected to B and B'. Use with lever in central position is not recommended.



CODE	TYPE	MAX FLOW L <sub>t</sub> / min	MAX PRESSURE Bar
<b>V0930</b>	DF 6 VIE 3/8" ACCIAIO	40	300
<b>V0932</b>	DF 6 VIE 1/2" ACCIAIO	60	300



CODE	TYPE	A-B P-T GAS	L mm	L1 mm	L2 mm	L3 mm	L4 mm	ØD mm	H mm	H1 mm	G mm	WEIGHT Kg.
<b>V0930</b>	DF 6 VIE 3/8" ACCIAIO	G 3/8"	60	140	58	32	25	47	74	96	M8	1,540
<b>V0932</b>	DF 6 VIE 1/2" ACCIAIO	G 1/2"	69	145	66	37	27	47	83	105	M8	2,294