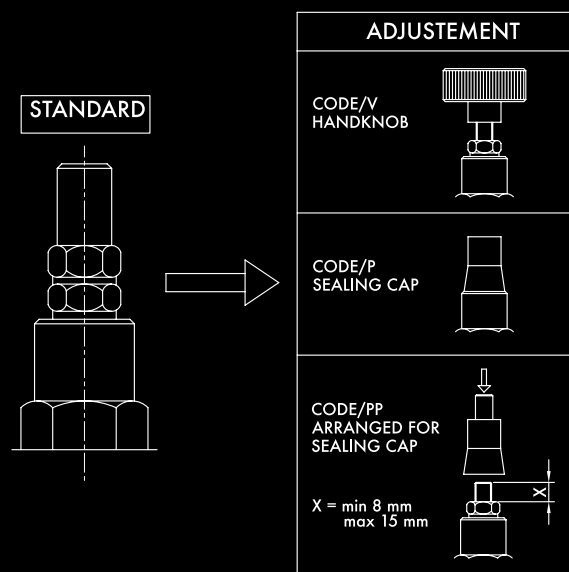






Schockventile DUAL CROSS REFIEF VALVES

In the standard version the setting pressure regulation is made by a screw protected by a steel cap. On request handknob type regulation are available in place of the socket screw. These valves can be supplied with special sealing caps for service or lockwire (CODE/P) or prepared for lockwire (CODE/PP)

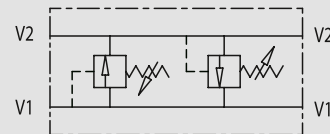


Schockventil



TYPE
VAU

HYDRAULIC DIAGRAM



DUAL CROSS RELIEF VALVES

USE AND OPERATION:

Made up by 2 relief valves with crossed tank, this valve is used to block pressure to a certain setting in the 2 ports of an actuator/hydraulic motor. It's ideal to provide protection against sudden shock pressures and to adjust different pressures in the 2 ports of an hydraulic circuit as well.

MATERIALS AND FEATURES:

Body: zinc-plated steel
Internal parts: hardened and ground steel.
Seals: BUNA N standard
Poppet type: minor leakage

APPLICATIONS:

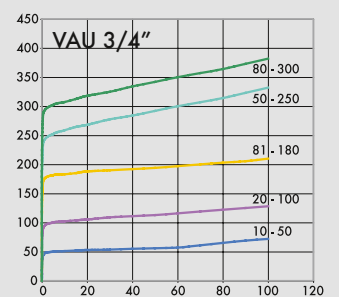
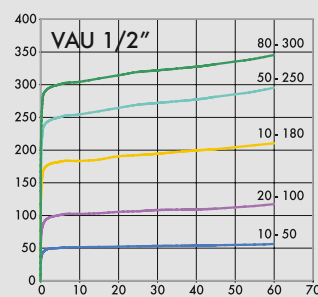
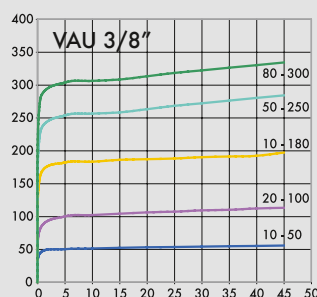
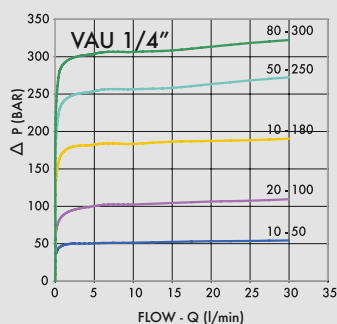
Connect V1 and V2 to the pressure flow or to the actuator/ hydraulic motor. Vice versa for the remaining ports V1 and V2. Mounting by the actuator is highly recommended in order to avoid pressure drops.

ON REQUEST

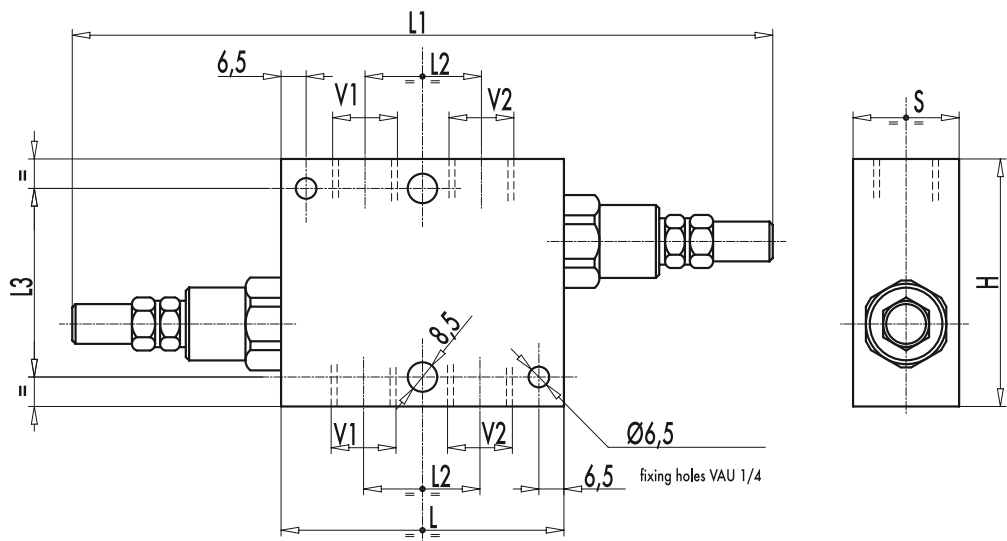
- different setting range (see the table)
- other settings available (CODE/T000 please specify the desired setting)

PRESSURE / FLOW

Oil temperature: 50° C - Oil viscosity: 30 cSt



CODE	TYPE	MAX FLOW Lt. / min
V0438	VAU 1/4"	30
V0440	VAU 3/8"	45
V0450	VAU 1/2"	70
V0460	VAU 3/4"	110



CODE	TYPE	V1 - V2 GAS	L mm	L1 mm	L2 mm	L3 mm	H mm	S mm	WEIGHT Kg
V0438	VAU 1/4"	G 1/4"	60	156	26	54	70	30	0,988
V0440	VAU 3/8"	G 3/8"	80	176	33	54	70	30	1,208
V0450	VAU 1/2"	G 1/2"	80	200	38	54	70	30	1,150
V0460	VAU 3/4"	G 3/4"	95	215	44	54	80	35	1,680

SPRINGS

Setting range (bar)	Pressure increase (bar/turn) Q= 4l/min	Standard setting (bar)
10 - 50*	7	30
20 - 100	12	75
10 - 180 standard	30	90
50 - 250	45	130
80 - 300	50	150

*For setting less than 70 Bar: Q = 12 l/min

ADJUSTEMENT

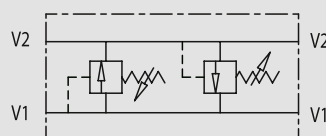
CODE/V	• Handknob
CODE/PP	• Arranged for sealing cap
CODE/PP	• Sealing cap

Schockventil - ölstromunempfindlich - 1"

TYPE
VAU



HYDRAULIC DIAGRAM



DIFFERENTIAL DUAL CROSS RELIEF VALVES, 1"

USE AND OPERATION:

Made up by 2 relief valves with crossed tank, this valve is used to block pressure to a certain setting in the 2 ports of an actuator/ hydraulic motor. It's ideal to provide protection against sudden shock pressures and to adjust different pressures in the 2 ports of an hydraulic circuit as well. The differential valve makes the opening slower but more constant setting even with flow changes.

MATERIALS AND FEATURES:

Body: zinc-plated steel
Internal parts: hardened and ground steel
Seals: BUNA N standard
Poppet type: minor leakage

APPLICATIONS:

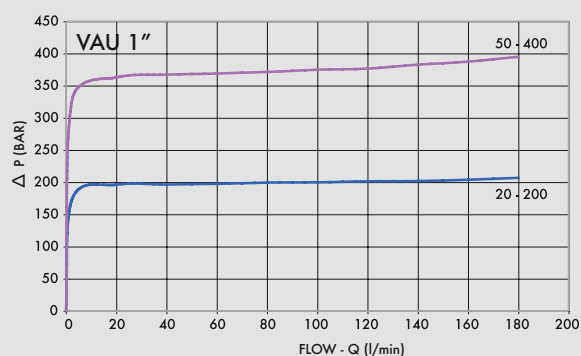
Connect V1 and V2 to the pressure flow or to the actuator/ hydraulic motor. Vice versa for the remaining ports V1 and V2. Mounting by the actuator is highly recommended in order to avoid pressure drops.

ON REQUEST

- different setting range (see the table)
- other setting available (CODE/T000 please specify the desired setting)

PRESSURE / FLOW

Oil temperature: 50° C - Oil viscosity: 30 cSt



CODE

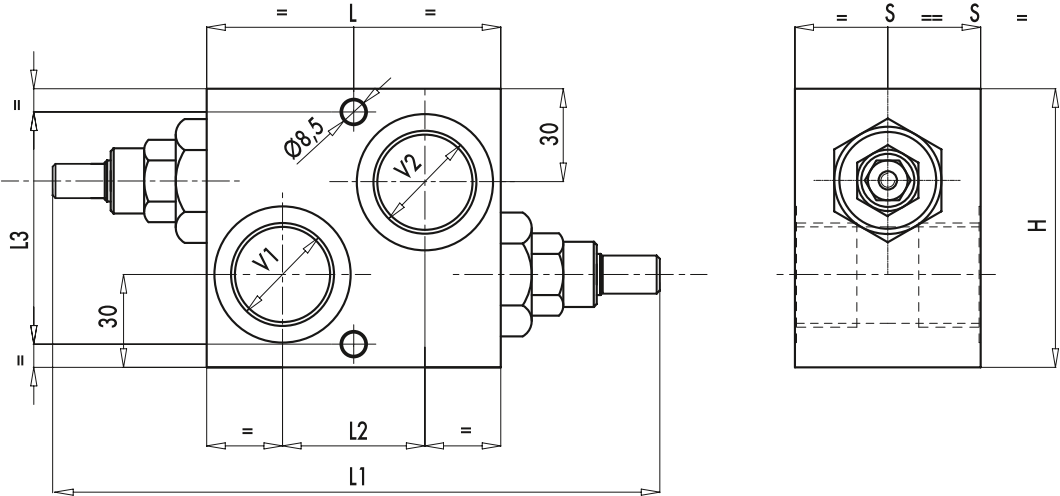
TYPE

MAX FLOW
Lt. / min

V0470

VAU 1"

160



5

CODE	TYPE	V1 - V2	L	L1	L2	L3	H	S	WEIGHT
		GAS	mm	mm	mm	mm	mm	mm	Kg
V0470	VAU 1"	G1"	95	199	46	75	90	60	3,200

SPRINGS

Setting range (bar)	Pressure increase (bar/turn) Q= 4l/min	Standard setting (bar)
20 - 200	40	160
50 - 400 STANDARD	80	180

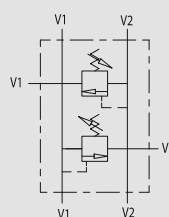
ADJUSTEMENT

CODE/V	• Handknob
CODE/PP	• Arranged for sealing cap
CODE/PP	• Sealing cap

Schockventil

TYPE
VMPDI

HYDRAULIC DIAGRAM



DUAL CROSS RELIEF VALVES

USE AND OPERATION:

Made up by 2 relief valves with crossed tank, this valve is used to block pressure to a certain setting in the 2 ports of an actuator/ hydraulic motor. It's ideal to provide protection against sudden shock pressures and to adjust different pressures in the 2 ports of an hydraulic circuit as well. The 6 ports (2 ways in and 4 ways out reversible) enable to use just 1 valves for 2 cylinders.

MATERIALS AND FEATURES:

Body: zinc-plated steel
Internal parts: hardened and ground steel.
Seals: BUNA N standard
Poppet type: minor leakage

APPLICATIONS:

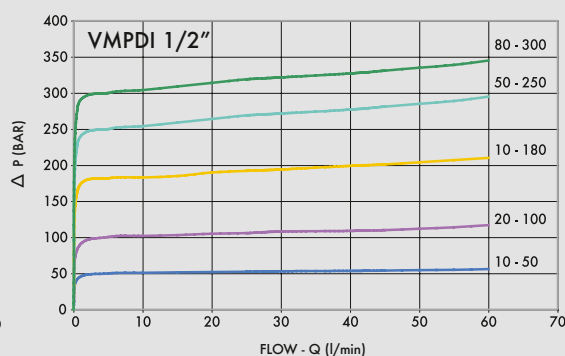
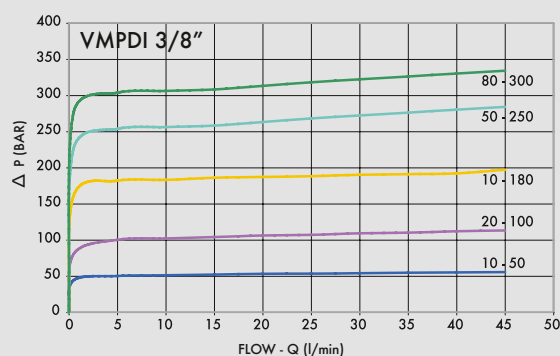
Connect V1 and V2 to the pressure flow or to the actuator/ hydraulic motor. Vice versa for the remaining ports V1 and V2. Mounting by the actuator is highly recommended in order to avoid pressure drops.

ON REQUEST

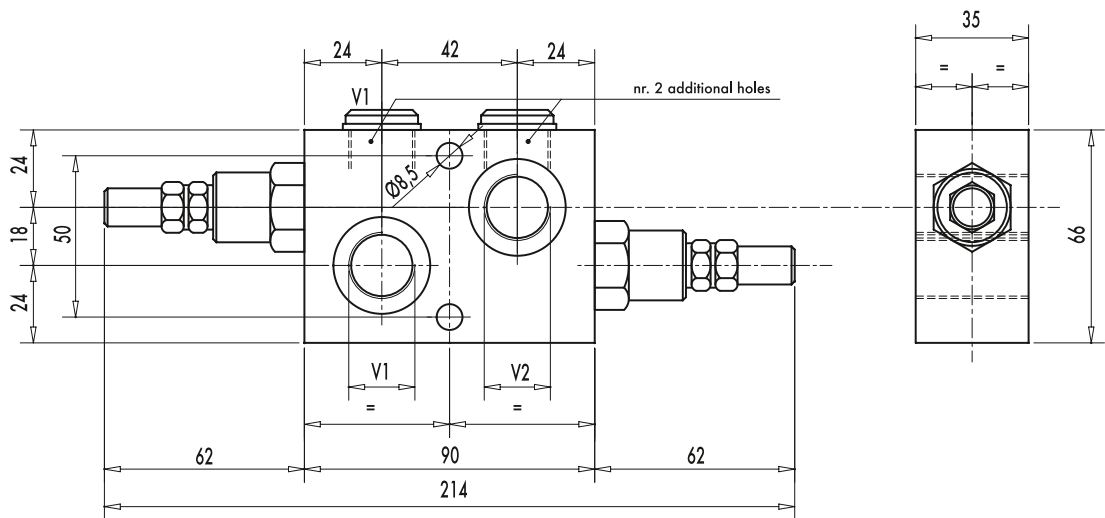
- different setting range (see the table)
- other setting available (CODE/T000 please specify the desired setting)

PRESSURE / FLOW

Oil temperature: 50° C - Oil viscosity: 30 cSt



CODE	TYPE	MAX FLOW Lt. / min
V0737	VMPDI 3/8"	45
V0738	VMPDI 1/2"	70



5

CODE	TYPE	V1 - V2 GAS	WEIGHT Kg
V0737	VMPDI 3/8"	G 3/8"	1,520
V0738	VMPDI 1/2"	G 1/2"	1,490

SPRINGS		
Setting range (bar)	Pressure increase (bar/turn) Q= 4l/min	Standard setting (bar)
10 - 50*	7	30
20 - 100	12	75
10 - 180 standard	30	90
50 - 250	45	130
80 - 300	50	150

ADJUSTEMENT	
CODE/V	• Handknob
CODE/PP	• Arranged for sealing cap
CODE/PP	• Sealing cap

*For setting less than 70 Bar: Q = 12 l/min

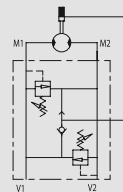
Schockventil - flanschbar für Danfoss Motoren OMP/OMR

TYPE

VAU OMP/OMR



HYDRAULIC DIAGRAM (with brake unclaping)



DUAL CROSS RELIEF VALVE FLANGEABLE ON DANFOSS MOTORS OMP/OMR

USE AND OPERATION:

Made up by 2 relief valves with crossed tank, this valve is used to block pressure to a certain setting in 1 port of the actuator (single acting) in the 2 ports of an actuator/hydraulic motor (double acting). It's ideal to provide protection against sudden shock pressures and to adjust different pressures in the 2 ports of an hydraulic circuit as well. Direct flange is ideal for Danfoss motors type OMP-OMR and provides a maximum safety, very low pressure drops and solid installation.

MATERIALS AND FEATURES:

Body: zinc-plated steel
Internal parts: hardened and ground steel.
Seals: BUNA N standard
Poppet type: minor leakage

APPLICATIONS:

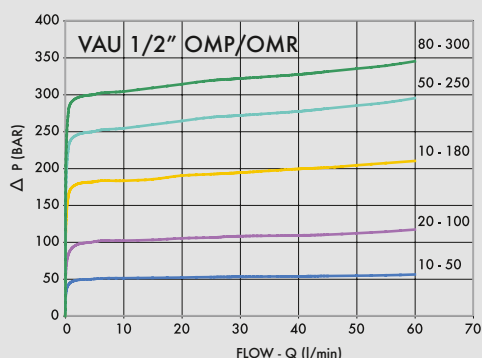
Flange M1 and M2 directly to the motor and connect ports V1 and V2 to pressure flow.

ON REQUEST

- different setting range (see the table)
- other setting available (CODE/T000 please specify the desired setting)

PRESSURE / FLOW

Oil temperature: 50° C - Oil viscosity: 30 cSt

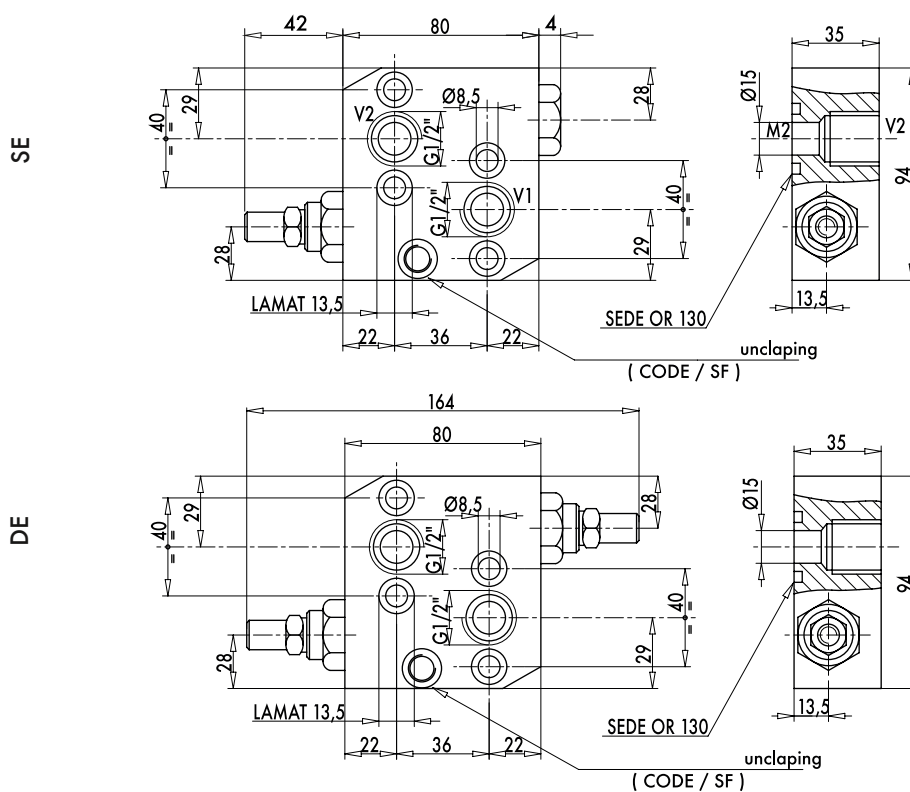


CODE

TYPE

MAX FLOW
lt. / min

V0499	VAU 1/2" SE OMP/OMR	60
V0499/SF	VAU 1/2" SE OMP/OMR SF	60
V0500	VAU 1/2" DE OMP/OMR	60
V0500/SF	VAU 1/2" DE OMP/OMR SF	60



CODE	TYPE	V1 - V2 GAS	WEIGHT Kg
V0499	VAU 1/2" SE OMP/OMR	G 1/2"	1,680
V0499/SF	VAU 1/2" SE OMP/OMR SF	G 1/2"	1,680
V0500	VAU 1/2" DE OMP/OMR	G 1/2"	1,752
V0500/SF	VAU 1/2" DE OMP/OMR SF	G 1/2"	1,752

SPRINGS

Setting range (bar)	Pressure increase (bar/turn) Q= 4l/min	Standard setting (bar)
10 - 50*	7	30
20 - 100	12	75
10 - 180 standard	30	90
50 - 250	45	130
80 - 300	50	150

* For setting less than 70 Bar: Q = 12 l/min

ADJUSTEMENT

CODE/V	• Handknob
CODE/PP	• Arranged for sealing cap
CODE/PP	• Sealing cap

Schockventil - flanschbar für Danfoss Motoren OMS/OMT



TYPE

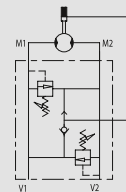
VAU OMT



TYPE

VAU OMS

HYDRAULIC DIAGRAM (with brake unclapping)



DUAL CROSS RELIEF VALVE FLANGEABLE ON DANFOSS MOTORS OMS/OMT

USE AND OPERATION:

Made up by 2 relief valves with crossed tank, this valve is used to block pressure to a certain setting in 1 port of the actuator (single acting) in the 2 ports of an actuator/hydraulic motor (double acting). It's ideal to provide protection against sudden shock pressures and to adjust different pressures in the 2 ports of an hydraulic circuit as well. Direct flange is ideal for Danfoss motors type OMS and OMT providing maximum safety, very low pressure drops and solid installation.

MATERIALS AND FEATURES:

Body: zinc-plated steel

Internal parts: hardened and ground steel.

Seals: BUNA N standard

Poppet type: minor leakage

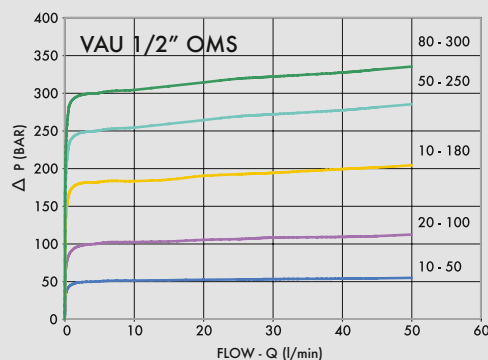
APPLICATIONS:

Flange M1 and M2 directly to the motor and connect ports V1 and V2 to pressure flow.

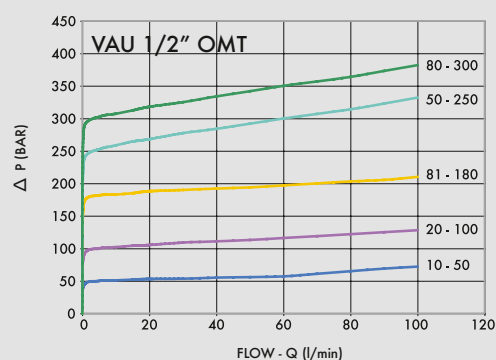
ON REQUEST

- different setting range (see the table)
- other setting available (CODE/T000 please specify the desired setting)

PRESSURE / FLOW



Oil temperature: 50° C - Oil viscosity: 30 cSt



CODE

TYPE

MAX FLOW
Lt. / min**V0490**

VAU 1/2" OMS

50

V0490/SF

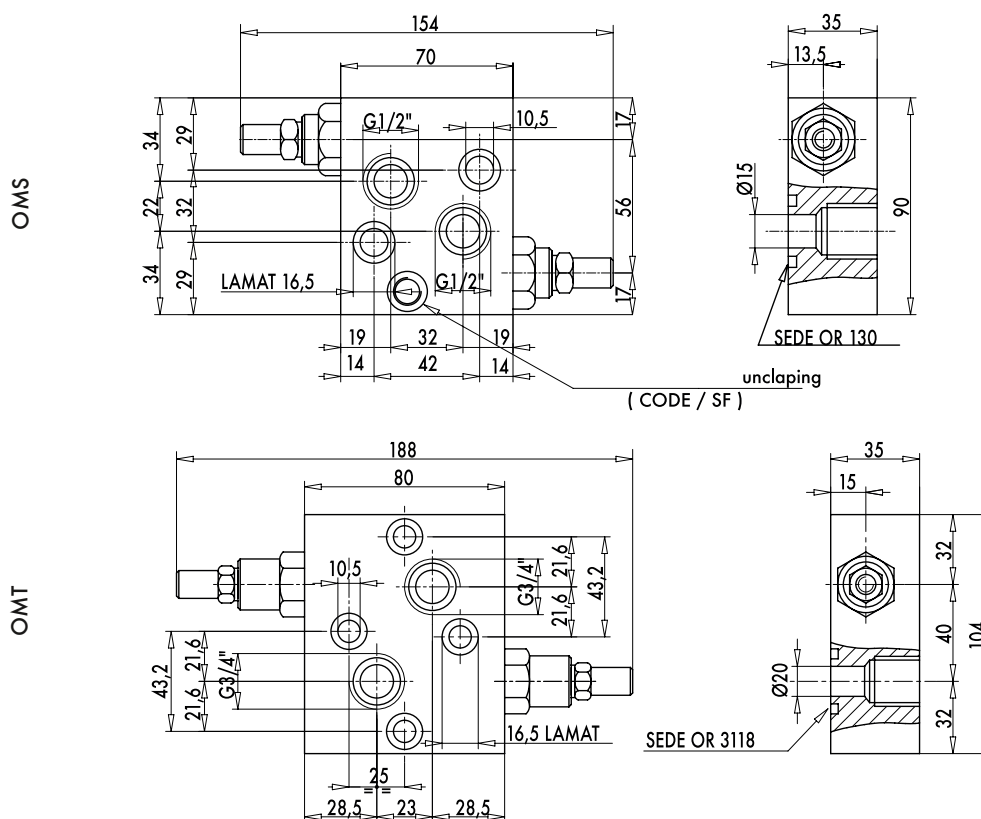
VAU 1/2" OMS SF

50

V0505

VAU 3/4" OMT

100



CODE

TYPE

V1 - V2

WEIGHT

GAS

Kg

V0490

VAU 1/2" OMS

G 1/2"

1,326

V0490/SF

VAU 1/2" OMS SF

G 1/2"

1,326

V0505

VAU 3/4" OMT

G 3/4"

1,920

SPRINGS

Setting range (bar)	Pressure increase (bar/turn) Q= 4l/min	Standard setting (bar)
10 - 50*	7	30
20 - 100	12	75
10 - 180 standard	30	90
50 - 250	45	130
80 - 300	50	150

*For setting less than 70 Bar: Q = 12 l/min

ADJUSTEMENT

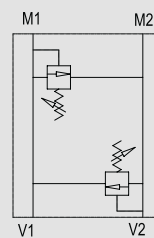
CODE/V	• Handknob
CODE/PP	• Arranged for sealing cap
CODE/PP	• Sealing cap

Schockventil - flanschbar für Danfoss Motoren OMP/OMR

TYPE

VAU OM WSC

HYDRAULIC DIAGRAM



DUAL CROSS RELIEF VALVE FLANGEABLE ON DANDOSS MOTORS OMP/ OMR BY SCREWS

USE AND OPERATION:

Made up by 2 relief valves with crossed tank, this valve is used to block pressure to a certain setting in the 2 ports of an actuator/hydraulic motor. It's ideal to provide protection against sudden shock pressures and to adjust different pressures in the 2 ports of an hydraulic circuit as well. Direct flange is ideal for Danfoss motors type OMP-OMR and provides a maximum safety, very low pressure drops and solid installation.

MATERIALS AND FEATURES:

Body: zinc-plated steel.
Internal parts: hardened and ground steel.
Seals: BUNA N standard
Poppet type: minor leakage

APPLICATIONS:

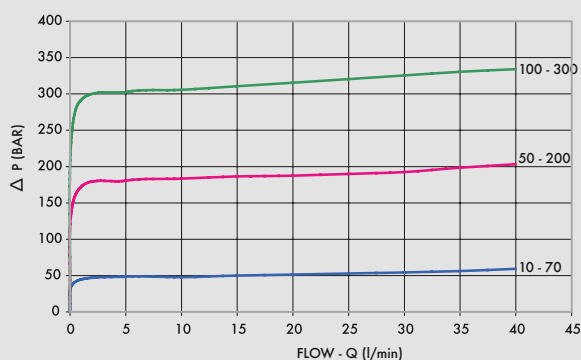
Flange M1 and M2 directly to the motor by screws (not included) and connect ports V1 and V2 to pressure flow.

ON REQUEST

- different setting range (see the table)
- other setting available (CODE/T000 please specify the desired setting)

PRESSURE DROPS CURVE

Oil temperature: 50° C - Oil viscosity: 30 cSt



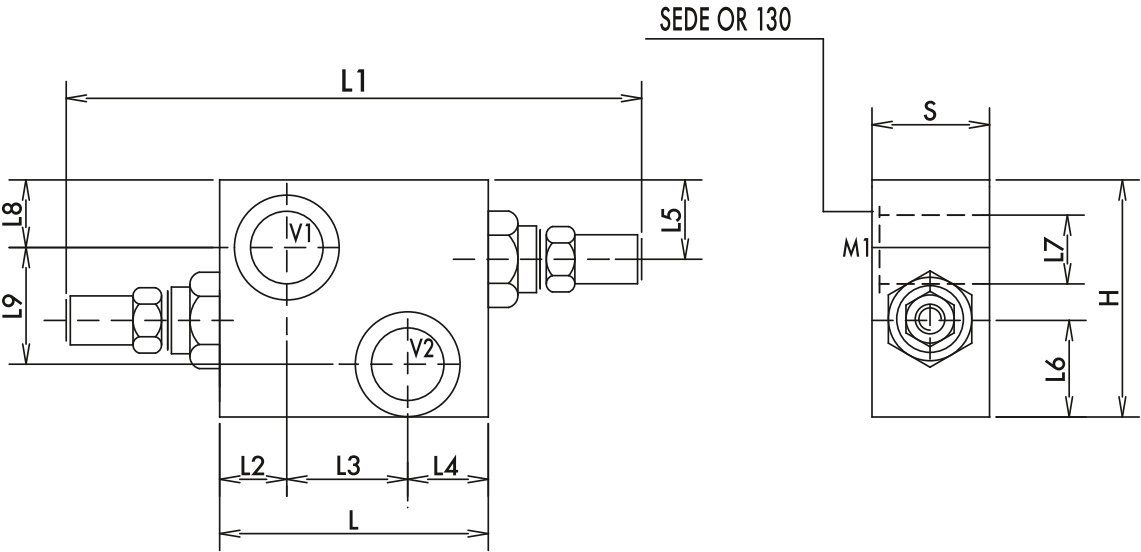
CODE	TYPE	MAX FLOW Lt. / min
------	------	-----------------------

V0503/000*

VAU OM 1/2" WSC

50

*000 = please specify the desired setting range. See the table below.



5

CODE	TYPE	V1 - V2 C1 - C2	L	L1	L2	L3	L4	L5	L6	ØL7	L8	L9	H	S	WEIGHT
		GAS	mm	mm	mm	mm	mm	mm	mm	mm	mm	mm	mm	mm	Kg
V0503/000*	VAU OM 1/2" WSC	G1/2"	80	164	19	36	25	20	29	21,3	18	36	70	30	1,150

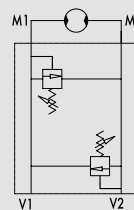
CODE	SETTING RANGE (Bar)	ADJUSTEMENT	
COD/070	10 - 70	CODE/V	• Handknob
COD/200	50 - 200	CODE/PP	• Arranged for sealing cap
COD/300	100 - 300	CODE/PP	• Sealing cap

Schockventil - flanschbar für Samhydraulik Motoren AG - AR

TYPE
VAU AG-AR



HYDRAULIC DIAGRAM (with brake unclapping)



DUAL CROSS RELIEF VALVE FLANGEABLE ON SAMHYDRAULIK MOTORS AG - AR

USE AND OPERATION:

Made up by 2 relief valves with crossed tank, this valve is used to block pressure to a certain setting in the 2 ports of an actuator/hydraulic motor. It's ideal to provide protection against sudden shock pressures and to adjust different pressures in the 2 ports of an hydraulic circuit as well. Direct flange is ideal for Samhydraulik motors type AG-AR and provides a maximum safety, very low pressure drops and solid installation.

MATERIALS AND FEATURES:

Body: zinc-plated steel.
Internal parts: hardened and ground steel.
Seals: BUNA N standard
Poppet type: minor leakage

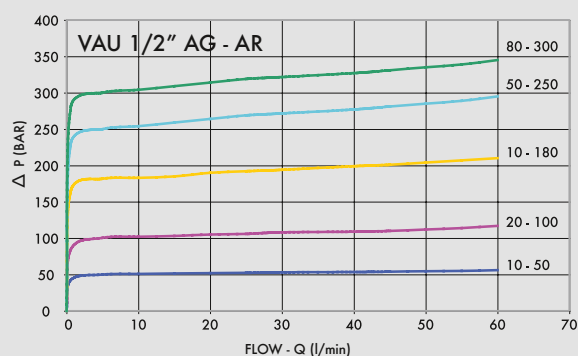
APPLICATIONS:

Flange M1 and M2 directly to the motor and connect ports V1 and V2 to pressure flow.

ON REQUEST

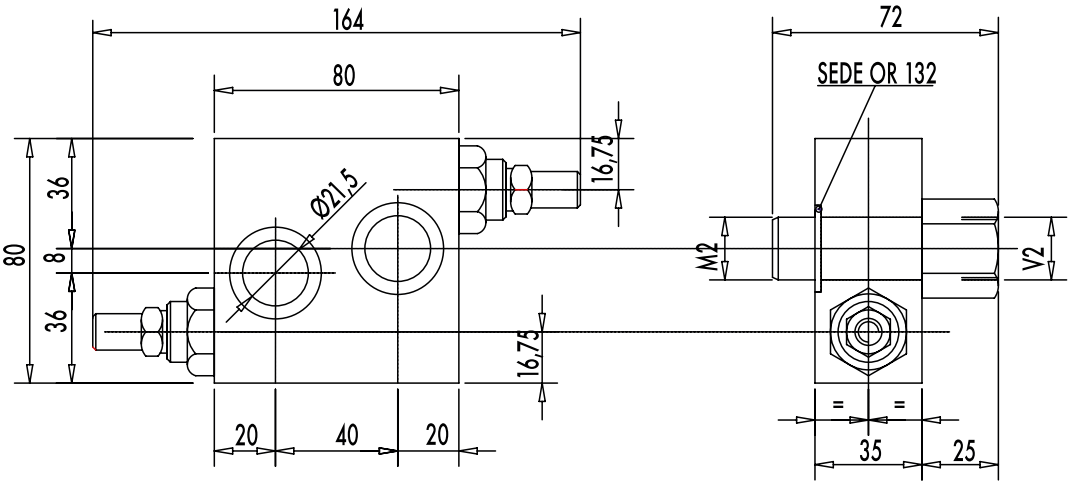
- different setting range (see the table)
- other setting available (CODE/T000 please specify the desired setting)

PRESSURE DROPS CURVE



Oil temperature: 50° C - Oil viscosity: 30 cSt

CODE	TYPE	MAX FLOW Lt. / min
V0455	VAU 1/2" AG - AR	60



5

CODE	TYPE	V2 - M2 GAS	WEIGHT Kg
V0455	VAU 1/2" AG - AR	G 1/2"	1,480

SPRINGS

Setting range (bar)	Pressure increase (bar/turn) Q= 4l/min	Standard setting (bar)
10 - 50*	7	30
20 - 100	12	75
10 - 180 standard	30	90
50 - 250	45	130
80 - 300	50	150

*For setting less than 70 Bar: Q = 12 l/min

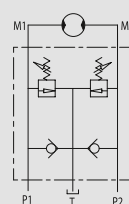
ADJUSTEMENT

CODE/V	• Handknob
CODE/PP	• Arranged for sealing cap
CODE/PP	• Sealing cap

Schockventil mit Nachsaugfunktion

TYPE
VAUAC

HYDRAULIC DIAGRAM



DUAL CROSS RELIEF VALVES WITH ANTI-CAVITATION

USE AND OPERATION:

This valve is used to block pressure to a certain setting in the 2 ports of an hydraulic motor: when it reaches pressure setting, the valve opens allowing pressure relief in T. The relief valve provides overload protection in a fast and accurate way and cavitation is avoid tanks to the check valve. It's suggested to mount set check valves to the tank way out (T).

MATERIALS AND FEATURES:

Body: zinc-plated steel (VAUAC 1/2") and aluminium (VAUAC 3/4")

Internal parts: hardened and ground steel.

Seals: BUNA N standard

Poppet type: minor leakage

APPLICATIONS:

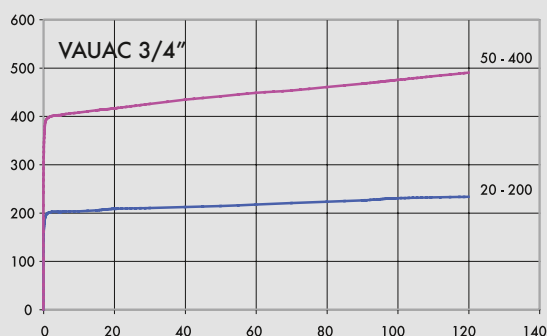
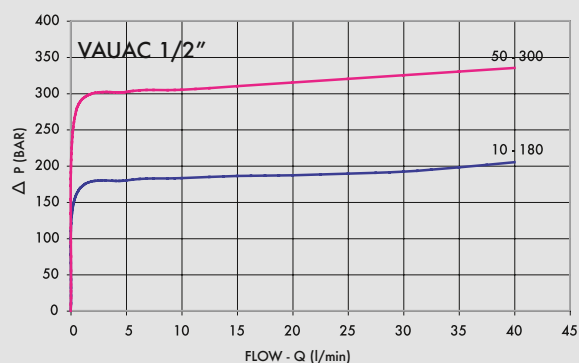
Connect M1 and M2 to the motor and P1 and P2 to the pressure flow. Connect T to the tank. Mounting by the actuator is highly recommended in order to avoid pressure drops and get a prompt duty.

ON REQUEST

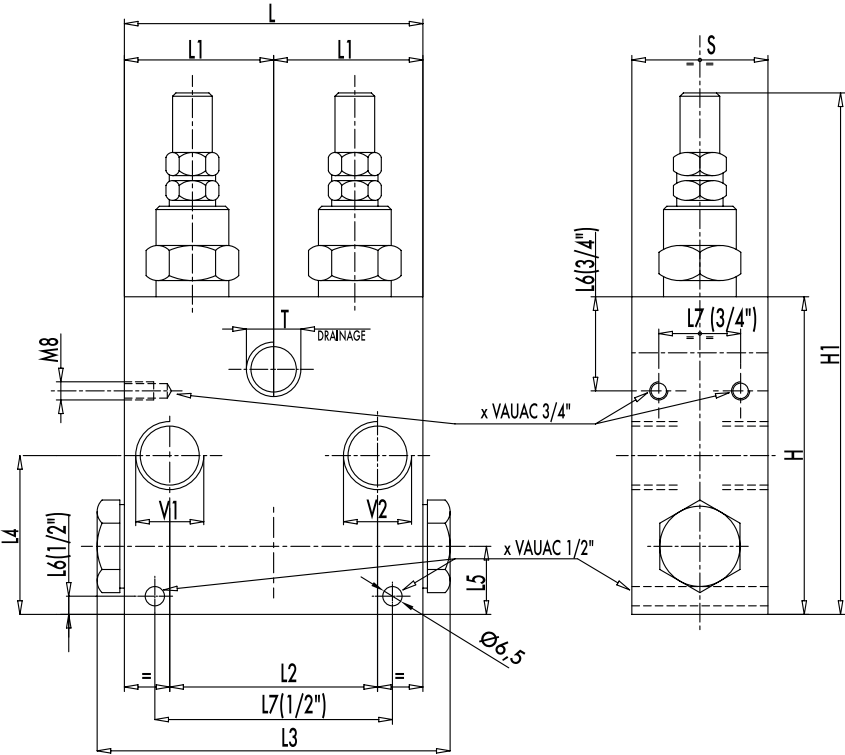
- different setting range (see the table)
- other setting available (CODE/T000: please specify the desired setting)

PRESSURE DROPS CURVE

Oil temperature: 50° C - Oil viscosity: 30 cSt



CODE	TYPE	MAX FLOW Lt. / min
V0508	VAUAC 1/2"	70
V0510	VAUAC 3/4"	110



CODE	TYPE	V1 - V2 GAS	T GAS	L mm	L1 mm	L2 mm	L3 mm	L4 mm	L5 mm	L6 mm	L7 mm	H mm	H1 mm	S mm	WEIGHT Kg
V0508	VAUAC 1/2"	G 1/2"	G 1/2"	80	40	42	102	48	24	8	50	112	174	35	2,254
V0510	VAUAC 3/4"	G 3/4"	G 1/2"	110	55	64	132	58	23	36	38	120	182	50	2,534

SPRINGS (VAUAC 1/2")

Setting range (bar)	Pressure increase (bar/turn) Q= 4l/min	Standard setting (bar)
10 - 180 standard	30	90
80 - 300	50	150

SPRINGS (VAUAC 3/4")

Setting range (bar)	Pressure increase (bar/turn) Q= 4l/min	Standard setting (bar)
20 - 200	40	160
50 - 400 standard	80	180

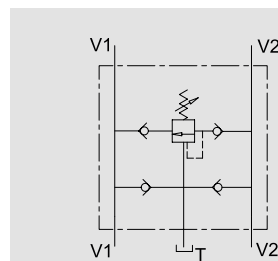
ADJUSTEMENT

CODE/V	• Handknob
CODE/PP	• Arranged for sealing cap
CODE/PP	• Sealing cap

Schockventil mit Nachsaugfunktion und Zentralsteuerung

TYPE
VAA/RU

HYDRAULIC DIAGRAM



DUAL CROSS RELIEF VALVE WITH ANTI-CAVITATION AND SINGLE ADJUSTMENT

USE AND OPERATION:

This valve is used to block pressure to a certain setting in the 2 ports of both hydraulic motor and actuator. The 2 check valves provide overload protection and cavitation is avoid during the slowing down of the actuator. We suggest to mount a set check valve to the tank (T).

MATERIALS AND FEATURES:

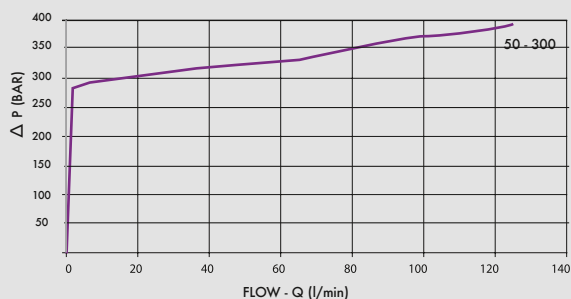
Body: zinc-plated steel.
Internal parts: hardened and ground steel.
Seals: BUNA N standard
Tightness: minor leakage.

APPLICATIONS:

Connect V1 and V2 ports to the motor, the others V1 and V2 ports to the pressure flow and T to the tank. Mounting by the actuator is highly recommended in order to avoid pressure drops and get a prompt duty.

PRESSURE DROPS CURVE

Oil temperature: 50° C - Oil viscosity: 30 cSt



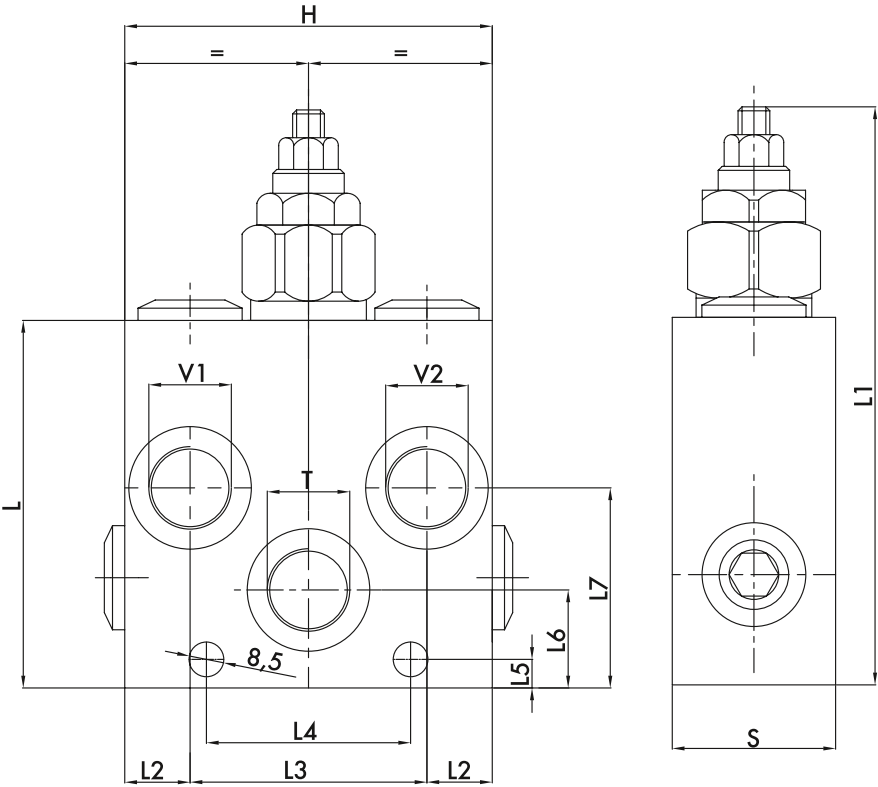
CODE	TYPE	MAX FLOW Lt. / min	PRESSURE RANGE Bar
------	------	-----------------------	-----------------------

V0508/RU

VAA/RU 1/2"

60

50 - 300



5

CODE	TYPE	V1 - V2 T GAS	L mm	L1 mm	L2 mm	L3 mm	L4 mm	L5 mm	L6 mm	L7 mm	H mm	S mm	WEIGHT Kg
V0508/RU	VAA/RU 1/2"	G 1/2"	90	142	16	58	50	7	24	49	90	40	2,182

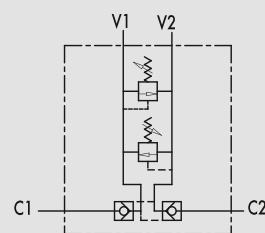
ADJUSTEMENT

CODE/V	• Handknob
CODE/PP	• Arranged for sealing cap
CODE/PP	• Sealing cap

Schockventil mit aufschaltbaren Rückschlagventilen

TYPE
VBAU

HYDRAULIC DIAGRAM



DUAL CROSS RELIEF VALVE WITH PILOT CHECK VALVE

USE AND OPERATION:

Made up by 1 double pilot check valve together with one double cross relief valve, this valve enables to block the actuator in one position and to limit inlet pressure to the actuator.

MATERIALS AND FEATURES:

Body: zinc-plated steel.

Internal parts: hardened and ground steel.

Seals: BUNA N standard

Poppet type: minor leakage

APPLICATIONS:

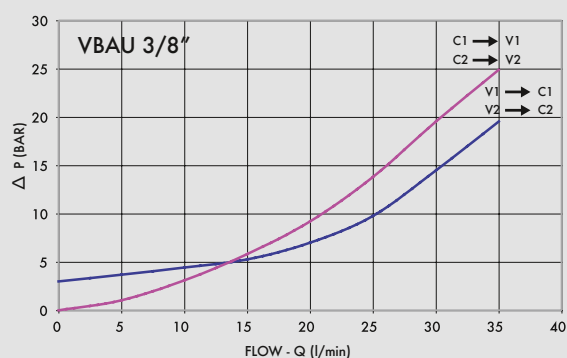
Connect V1 and V2 to the pressure flow and C1 and C2 to the actuator.

ON REQUEST

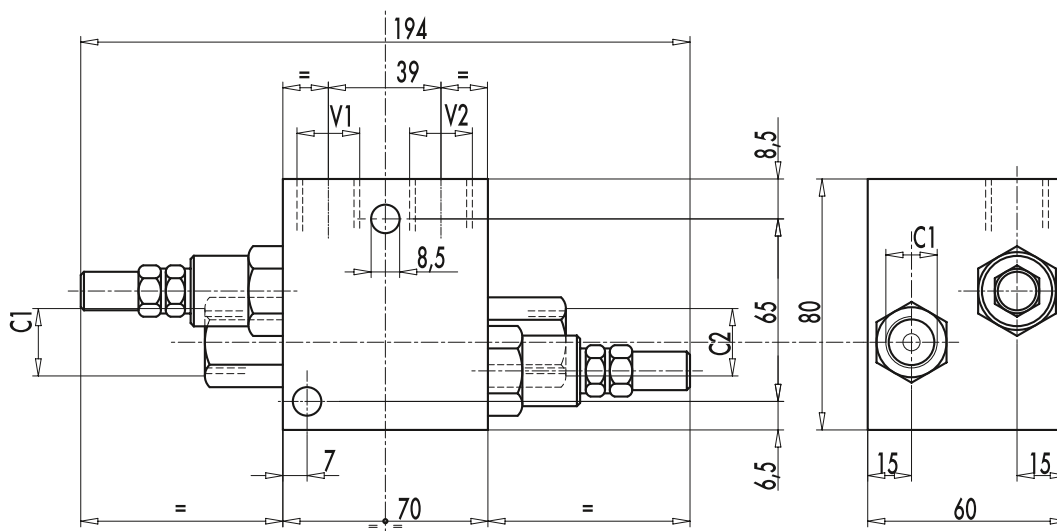
- other setting available (CODE/T000 please specify the desired setting)

PRESSURE DROPS CURVE

Oil temperature: 50° C - Oil viscosity: 30 cSt



CODE	TYPE	MAX FLOW lt. / min
V0444	VBAU 3/8"	35



CODE	TYPE	GAS	WEIGHT Kg
V0444	VBAU 3/8"	G 3/8"	2,534

SPRINGS		
Setting range (bar)	Pressure increase (bar/turn) Q= 4l/min	Standard setting (bar)
10-180	40	100

ADJUSTMENT	
CODE/V	• Handknob
CODE/PP	• Arranged for sealing cap
CODE/PP	• Sealing cap